



ANGLO CHINESE SCHOOL (BAKER RD)

ANGLO CHINESE PRIMARY SCHOOL

NEWTON MRT

ANGLO CHINESE SCHOOL JUNIOR

LITTLE INDIA

ROCHOR (U/C)

LASALLE

NAFA

BUGIS

BUGIS+

BUGIS JUNCTION

THE ISTANA

ST. MARGARET'S PRIMARY SCHOOL

WILKIE EDGE

PEACE CENTRE

POMO

SOTA

BENCOOLEN MRT (U/C)

SINGAPORE ART MUSEUM

NATIONAL LIBRARY

FAR EAST PLAZA

SCOTTS SQUARE

SHAW HOUSE

TANGS PLAZA

THE PARAGON

STEPS LEADING TO HANDY ROAD

PLAZA SINGAPURA

THE ATRIUM ORCHARD

THE CATHAY

SMU

BRAS BASAH

BRAS BASAH

SUNTEC CITY

MILLENNIA WALK

F1 BUILDING

SINGAPORE FLYER

MARINA SQUARE

ESPLANADE

ORCHARD ROAD

DHOBY GHAUT INTERCHANGE

NATIONAL MUSEUM OF SINGAPORE

RAFFLES CITY TOWER

ORCHARD ROAD

WHEELOK PLACE

ION

WISMA ATRIA

TAKASHIMAYA

313 SOMERSET

ORCHARD CENTRAL

PENANG ROAD

PARK MALL

FORT CANNING ROAD

NATIONAL MUSEUM OF SINGAPORE

STAMFORD ROAD

CITY HALL INTERCHANGE

ESPLANADE THEATRES ON THE BAY

ORCHARD BOULEVARD

SOMERSET

FORT CANNING PARK

FORT CANNING PARK

CITY HALL INTERCHANGE

ESPLANADE THEATRES ON THE BAY

ISS INTERNATIONAL SCHOOL

OVERSEAS FAMILY SCHOOL

FORT CANNING (U/C)

FORT CANNING (U/C)

FORT CANNING PARK

CITY HALL INTERCHANGE

VICTORIA THEATRE & CONCERT HALL

ESPLANADE THEATRES ON THE BAY

MARINA BAY

MARINA BAY SANDS

RIVER VALLEY PRIMARY SCHOOL

FORT CANNING (U/C)

FORT CANNING PARK

CENTRAL

CLARKE QUAY

ASIAN CIVILISATIONS MUSEUM

ESPLANADE THEATRES ON THE BAY

MARINA BAY

MARINA BAY SANDS

CENTRAL BUSINESS DISTRICT

RAFFLES PLACE INTERCHANGE



\*Map Drawn Not To Scale









# 1 BEDROOM

## TYPE A1

**43 SQM / 463 SQFT**  
INCLUSIVE OF 7 SQM PES / BALCONY  
& 1 SQM AC LEDGE

UNIT

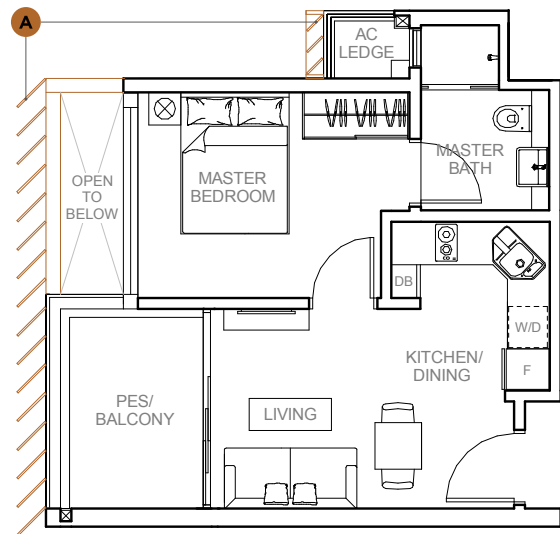
**BLOCK 27**  
#01-100 (PES)

**BLOCK 27**  
#02-100 TO #06-100

SCREENING

**A**

**BLOCK 27**  
#06-100



## TYPE A2

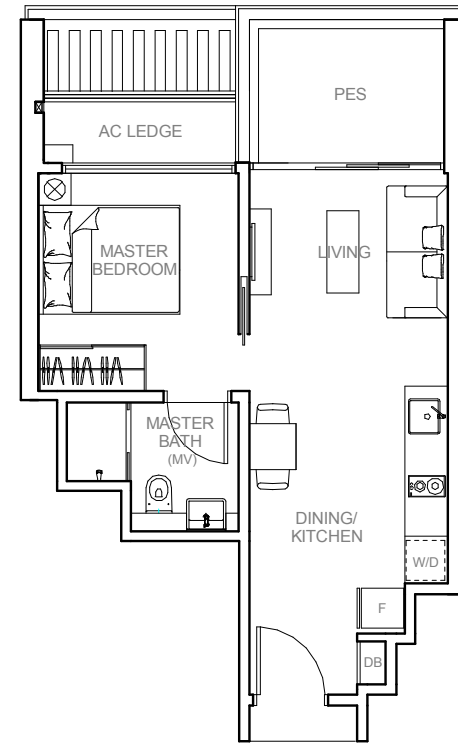
**47 SQM / 506 SQFT**  
INCLUSIVE OF 7 SQM PES  
& 3 SQM AC LEDGE

UNIT

**BLOCK 7**  
#01-11

**BLOCK 9**  
#01-21

**BLOCK 11**  
#01-39\*



## TYPE A3

**47 SQM / 506 SQFT**  
INCLUSIVE OF 7 SQM PES  
& 3 SQM AC LEDGE

UNIT

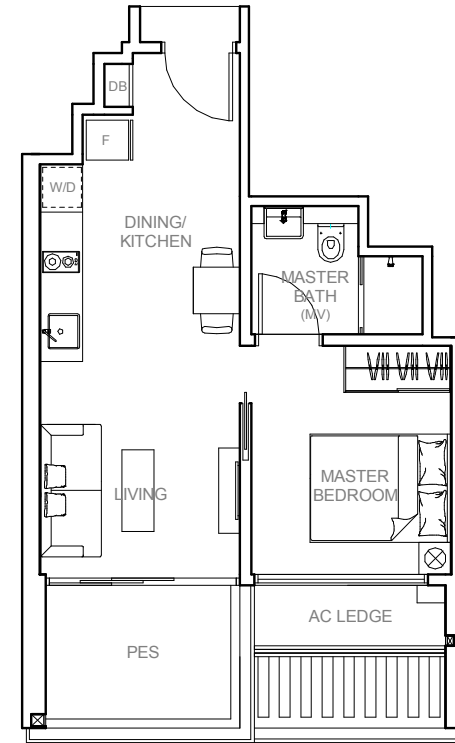
**BLOCK 17**  
#02-58\*

**BLOCK 19**  
#02-67\*

**BLOCK 21**  
#01-68

**BLOCK 23**  
#01-74

**BLOCK 25**  
#01-91\*



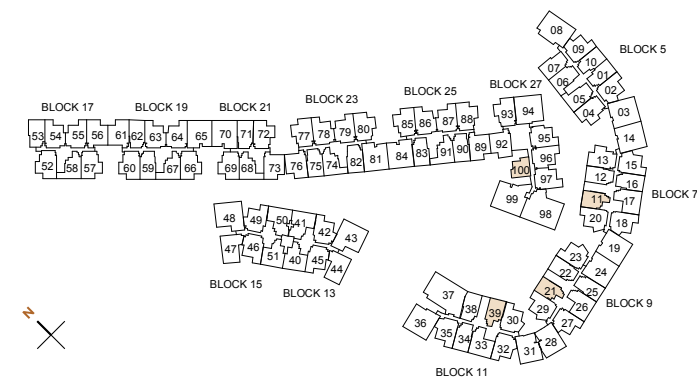
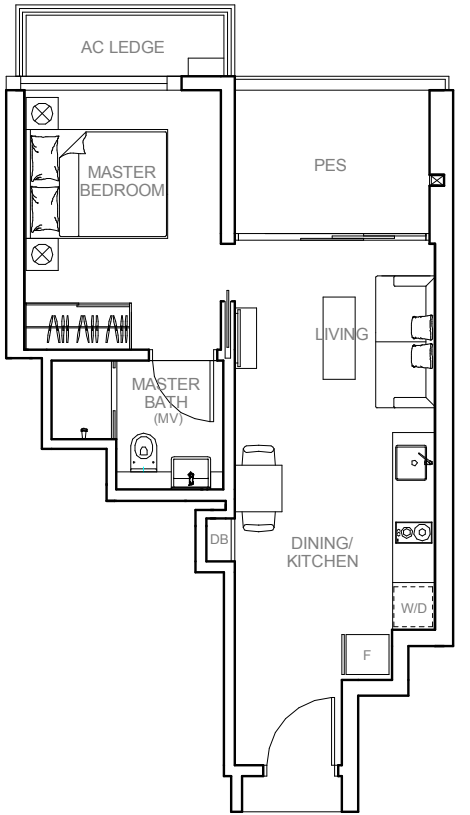
## TYPE A4

**48 SQM / 517 SQFT**  
INCLUSIVE OF 7 SQM PES  
& 3 SQM AC LEDGE

UNIT

**BLOCK 13**  
#01-41

**BLOCK 15**  
#01-50\*



0 1M 3M 5M

**F** FRIDGE      **DB** DISTRIBUTION BOARD CABINET  
**W/D** WASHER CUM DRYER      \* MIRRORED UNIT

# 1 BEDROOM

## TYPE A3

**47 SQM / 506 SQFT**  
INCLUSIVE OF 7 SQM PES  
& 3 SQM AC LEDGE

UNIT

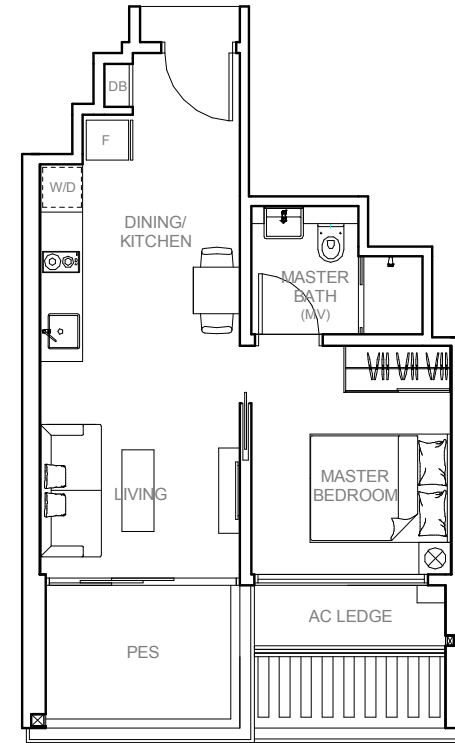
**BLOCK 17**  
#02-58\*

**BLOCK 19**  
#02-67\*

**BLOCK 21**  
#01-68

**BLOCK 23**  
#01-74

**BLOCK 25**  
#01-91\*



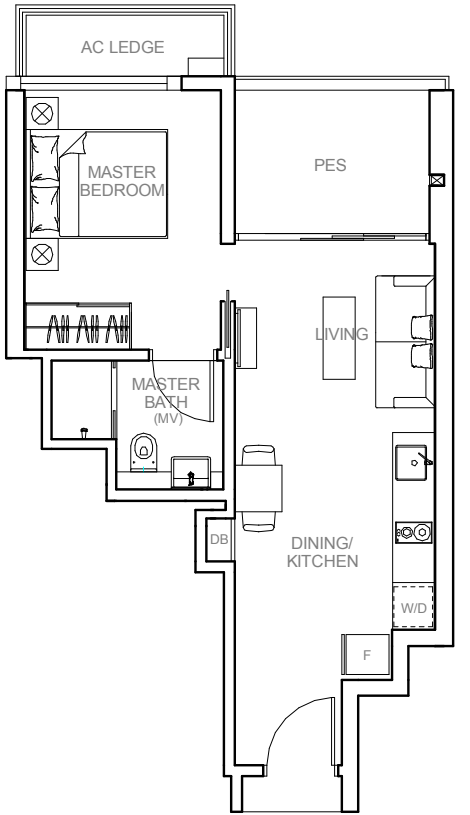
## TYPE A4

**48 SQM / 517 SQFT**  
INCLUSIVE OF 7 SQM PES  
& 3 SQM AC LEDGE

UNIT

**BLOCK 13**  
#01-41

**BLOCK 15**  
#01-50\*



0 1M 3M 5M

**F** FRIDGE      **W/D** WASHER CUM DRYER  
**DB** DISTRIBUTION BOARD CABINET      \* MIRRORED UNIT

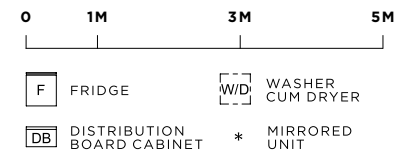
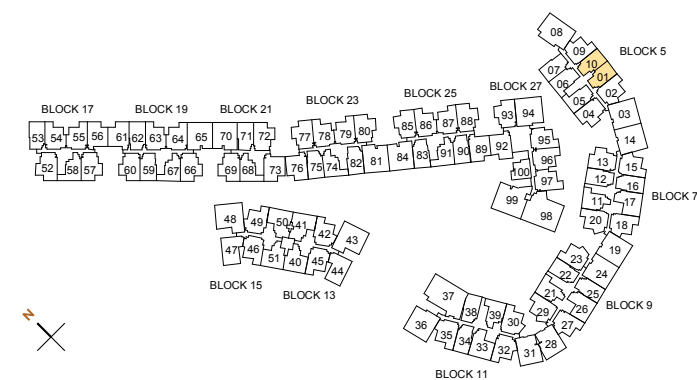
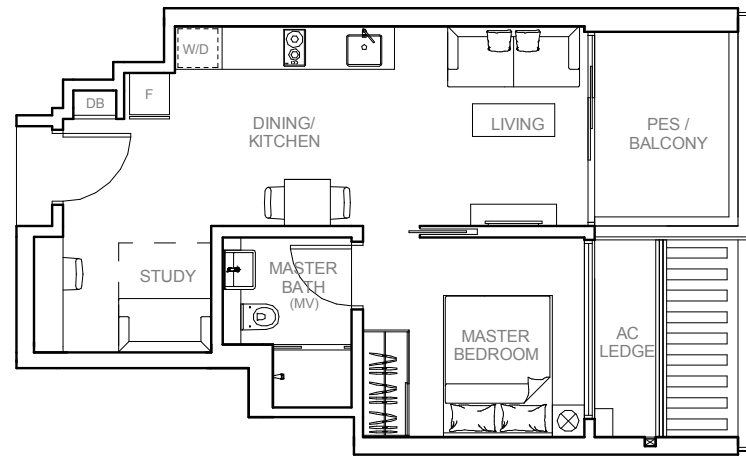
# 1 BEDROOM + STUDY

## TYPE A5

52 SQM / 560 SQFT  
INCLUSIVE OF 7 SQM PES / BALCONY  
& 3 SQM AC LEDGE

UNIT

**BLOCK 5**  
#01-01 (PES)\*  
#02-01 TO #05-01\*  
#01-10 (PES)  
#02-10 TO #05-10



# 1 BEDROOM + STUDY

## TYPE A6

53 SQM / 570 SQFT  
INCLUSIVE OF 7 SQM PES / BALCONY  
& 3 SQM AC LEDGE

UNIT

**BLOCK 7**  
#01-12 (PES)\*  
#02-12 TO #04-12\*  
#01-16 (PES)\*  
#02-16 TO #04-16\*

**BLOCK 9**  
#01-22 (PES)\*  
#02-22 TO #04-22\*  
#01-25 (PES)\*  
#02-25 TO #04-25\*

**BLOCK 11**  
#01-34 (PES)  
#02-34 TO #04-34

**BLOCK 19**  
#02-59 (PES)  
#03-59 TO #06-59  
#01-62 (PES)  
#02-62 TO #06-62

**BLOCK 21**  
#01-71 (PES)  
#02-71 TO #07-71

**BLOCK 23**  
#01-75 (PES)\*  
#02-75 TO #06-75\*  
#01-82 (PES)\*  
#02-82 TO #06-82\*

**BLOCK 25**  
#01-83 (PES)  
#02-83 TO #06-83  
#01-90 (PES)  
#02-90 TO #06-90

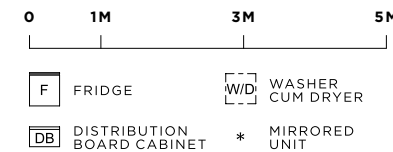
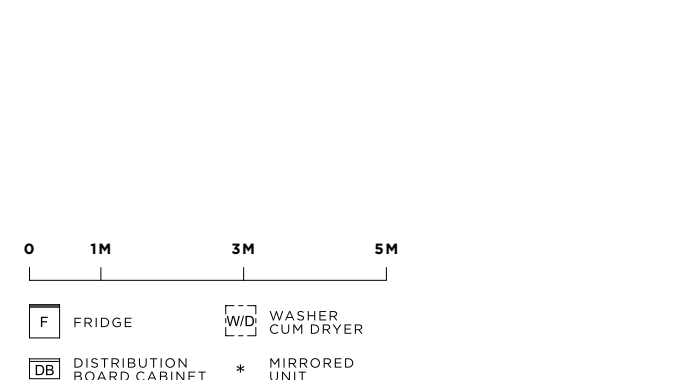
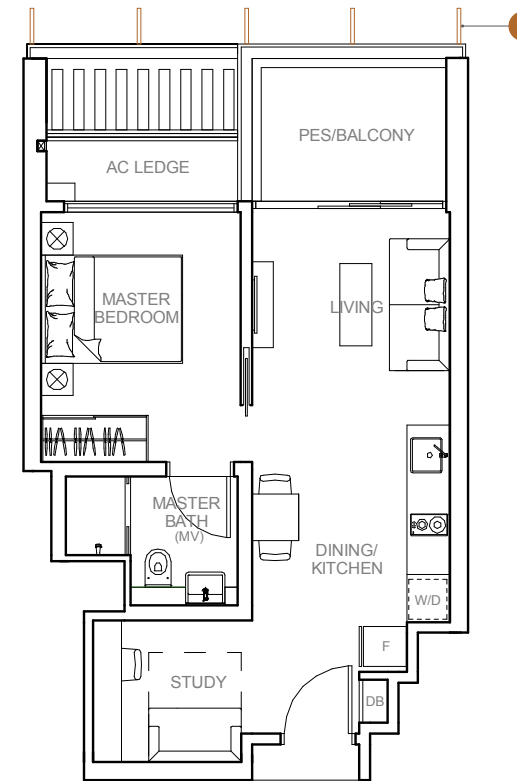
SCREENING



**BLOCK 21**  
#07-71

**BLOCK 23**  
#06-75\*  
#06-82\*

**BLOCK 25**  
#06-83  
#06-90



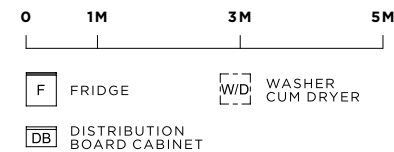
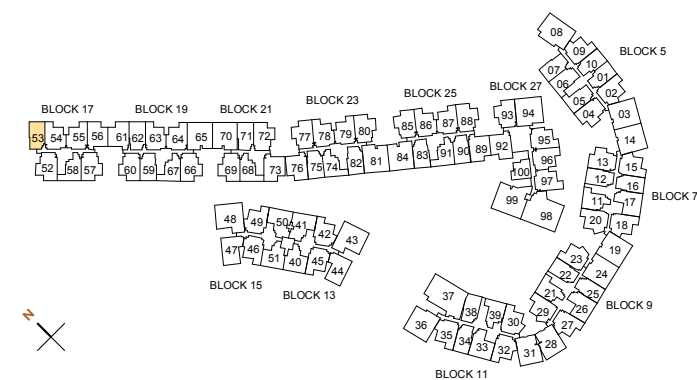
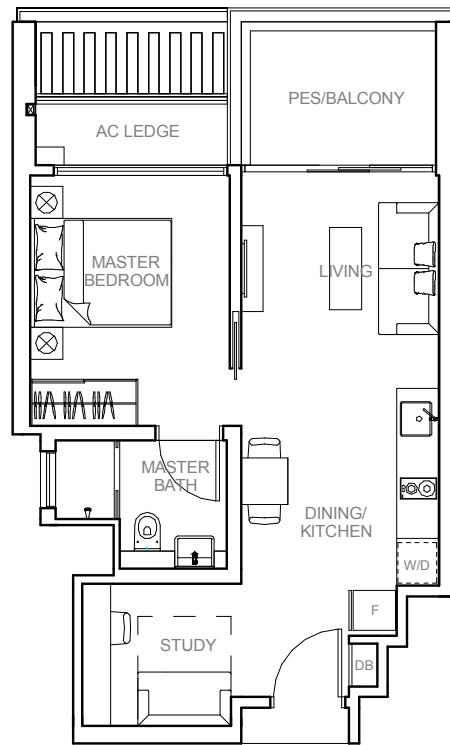
# 1 BEDROOM + STUDY

## TYPE A6a

53 SQM / 570 SQFT  
INCLUSIVE OF 7 SQM PES / BALCONY  
& 3 SQM AC LEDGE

UNIT

**BLOCK 17**  
#01-53 (PES)  
#02-53



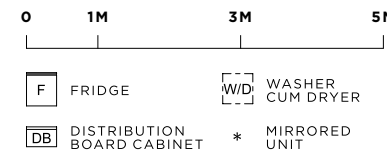
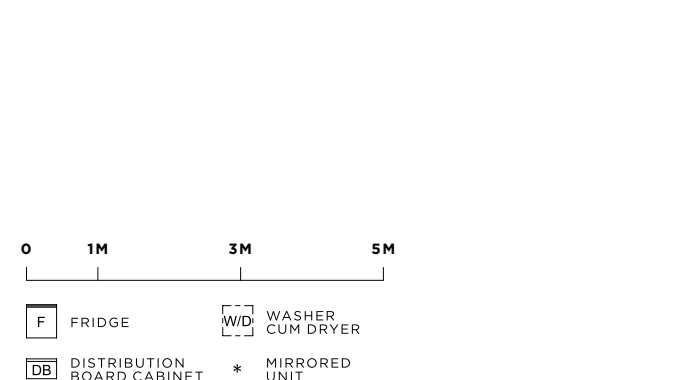
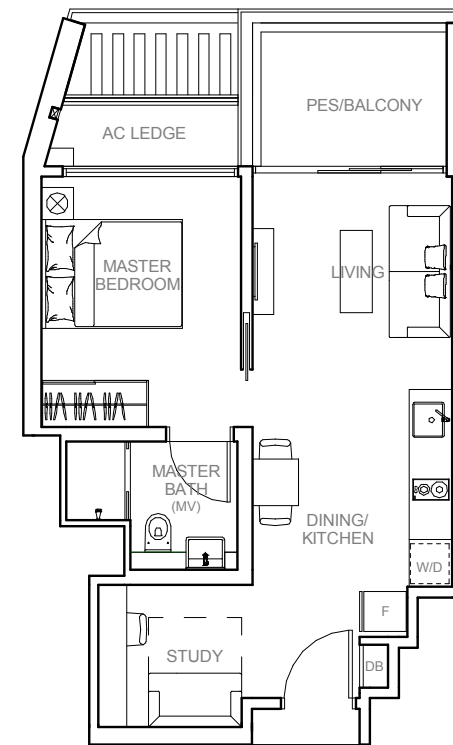
# 1 BEDROOM + STUDY

## TYPE A7

53 SQM / 570 SQFT  
INCLUSIVE OF 7 SQM PES / BALCONY  
& 3 SQM AC LEDGE

UNIT

**BLOCK 11**  
#01-38 (PES)  
#02-38 TO #04-38

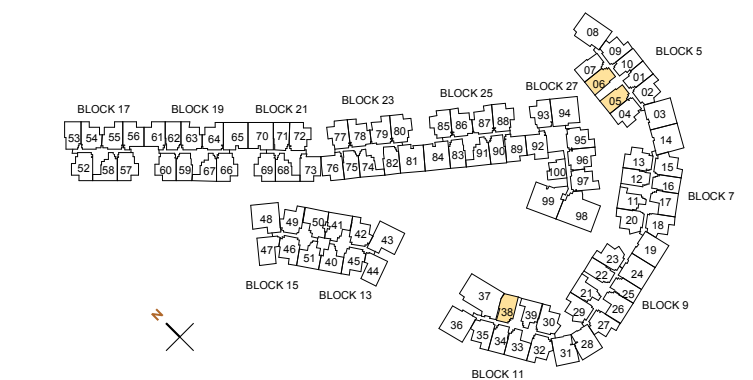
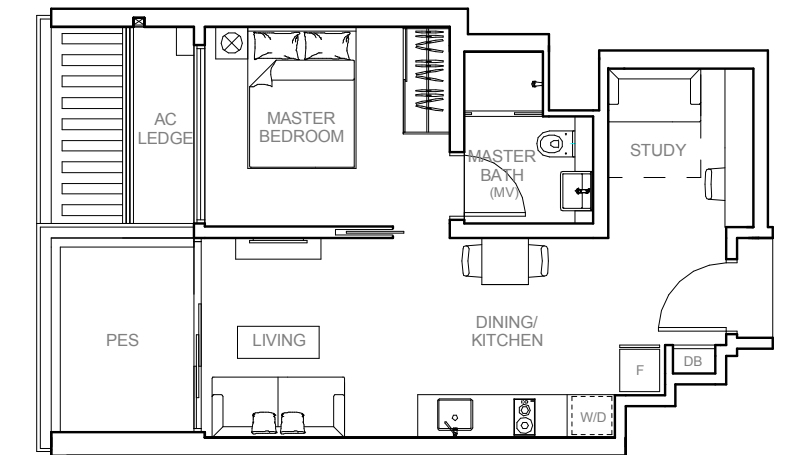


## TYPE A8-G

53 SQM / 570 SQFT  
INCLUSIVE OF 7 SQM PES  
& 3 SQM AC LEDGE

UNIT

**BLOCK 5**  
#01-05  
#01-06\*



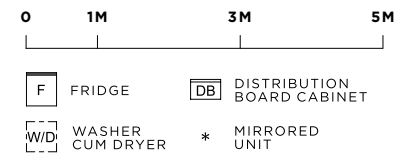
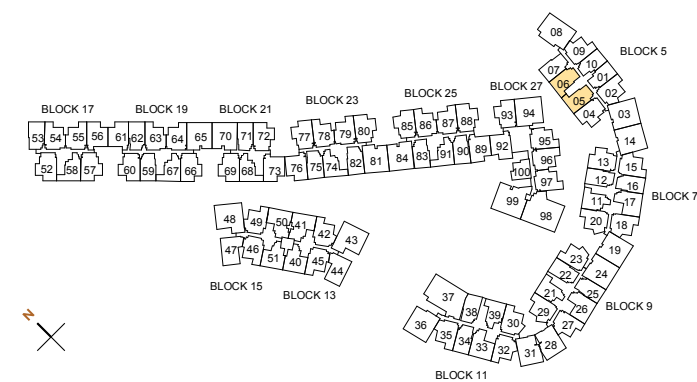
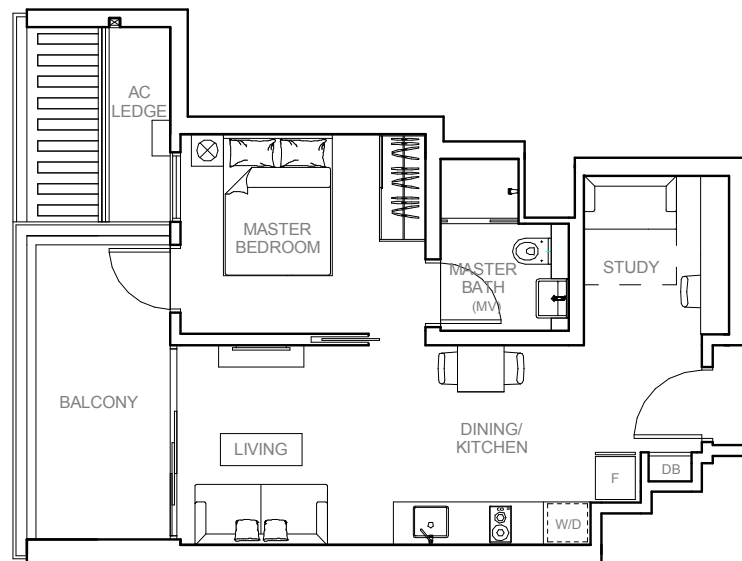
# 1 BEDROOM + STUDY

## TYPE A8

57 SQM / 614 SQFT  
INCLUSIVE OF 11 SQM BALCONY  
& 3 SQM AC LEDGE

UNIT

**BLOCK 5**  
#02-05 TO #05-05  
#02-06 TO #05-06\*



# 2 BEDROOM

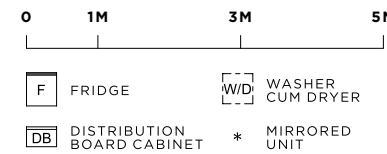
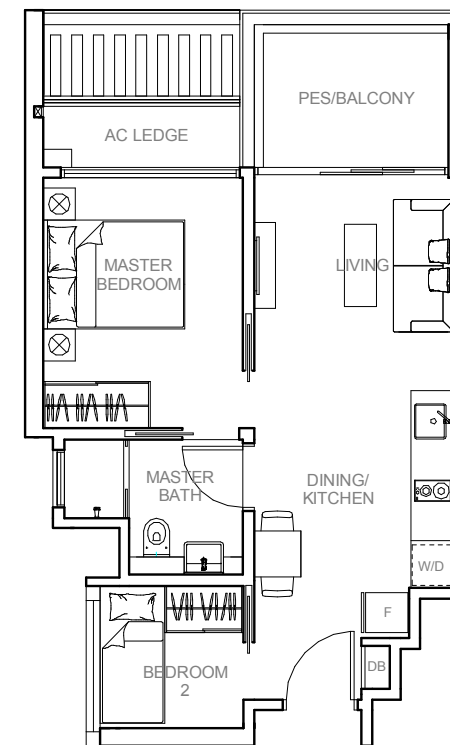
## TYPE B1

53 SQM / 570 SQFT  
INCLUSIVE OF 7 SQM PES / BALCONY  
& 3 SQM AC LEDGE

UNIT

**BLOCK 5**  
#01-07 (PES)\*  
#02-07 TO #05-07\*

**BLOCK 17**  
#03-53  
#04-53



## TYPE B2

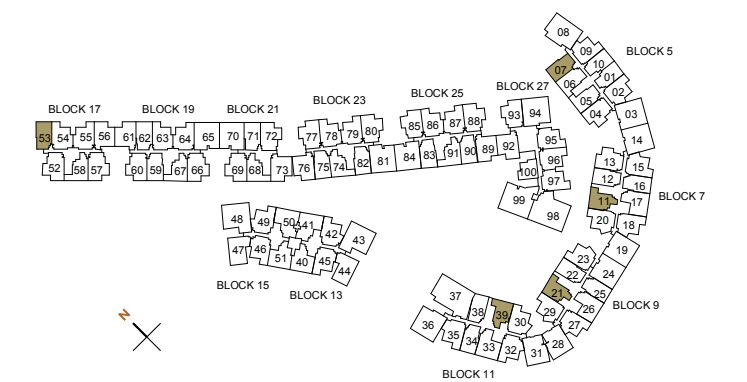
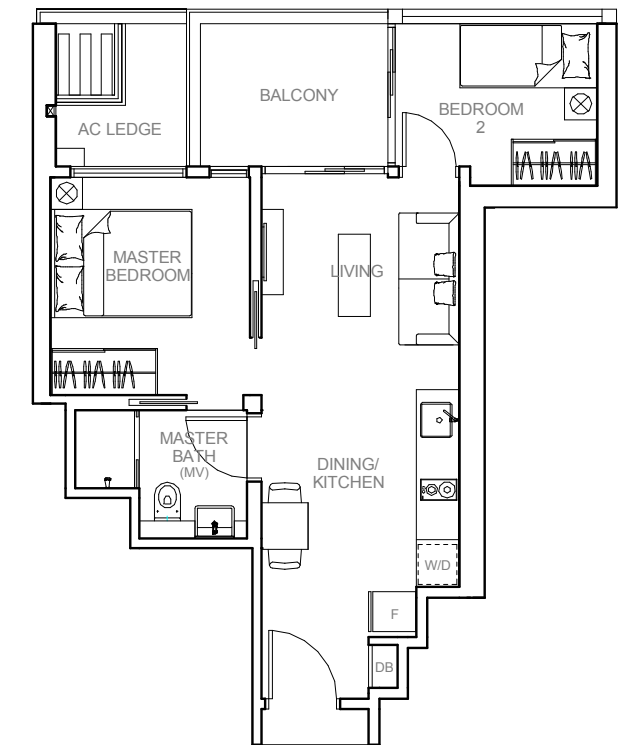
54 SQM / 581 SQFT  
INCLUSIVE OF 7 SQM BALCONY  
& 3 SQM AC LEDGE

UNIT

**BLOCK 7**  
#02-11 TO #04-11

**BLOCK 9**  
#02-21 TO #04-21

**BLOCK 11**  
#02-39 TO #04-39\*



## 2 BEDROOM

### TYPE B3

55 SQM / 592 SQFT  
INCLUSIVE OF 9 SQM BALCONY  
& 4 SQM AC LEDGE

UNIT

**BLOCK 17**  
#03-58\*  
#04-58\*

**BLOCK 19**  
#03-67 TO #06-67\*

**BLOCK 21**  
#02-68 TO #07-68

**BLOCK 23**  
#02-74 TO #06-74

**BLOCK 25**  
#02-91 TO #06-91\*

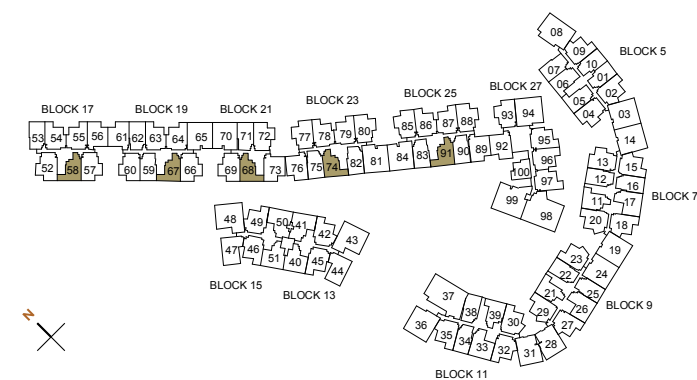
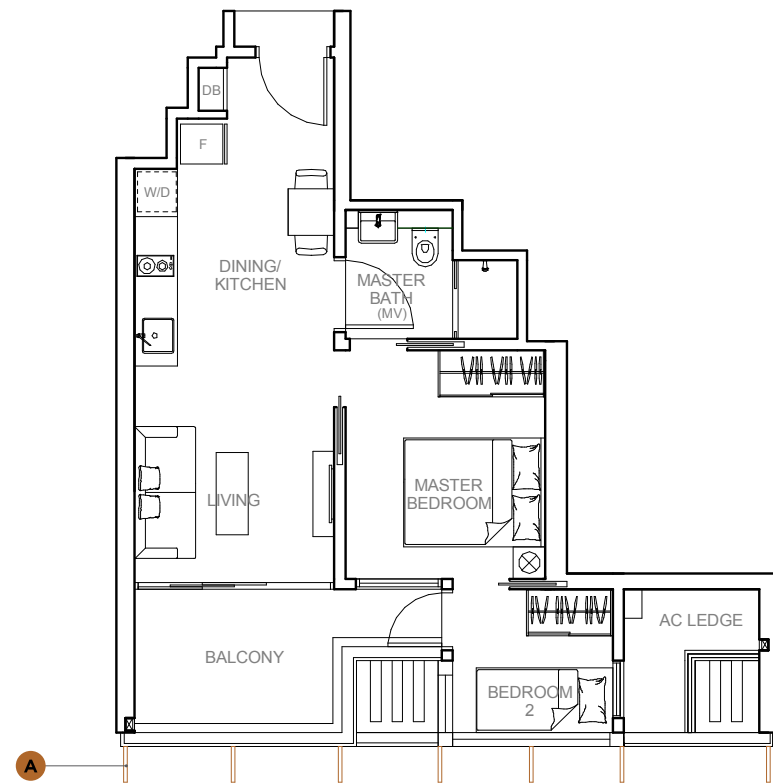
SCREENING

**A**

**BLOCK 21**  
#07-68

**BLOCK 23**  
#06-74

**BLOCK 25**  
#06-91\*



0 1M 3M 5M

F FRIDGE W/D WASHER CUM DRYER  
DB DISTRIBUTION BOARD CABINET \* MIRRORED UNIT

## 2 BEDROOM

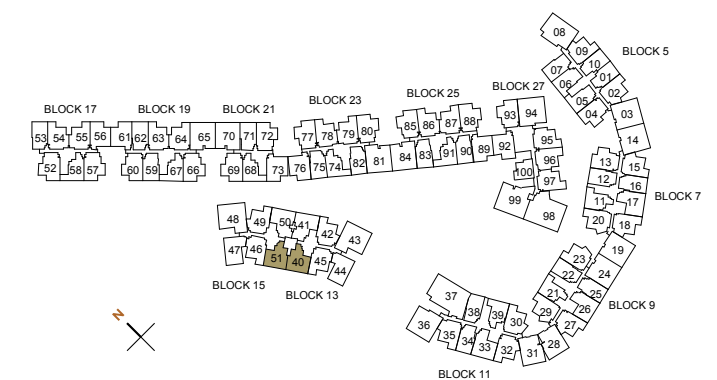
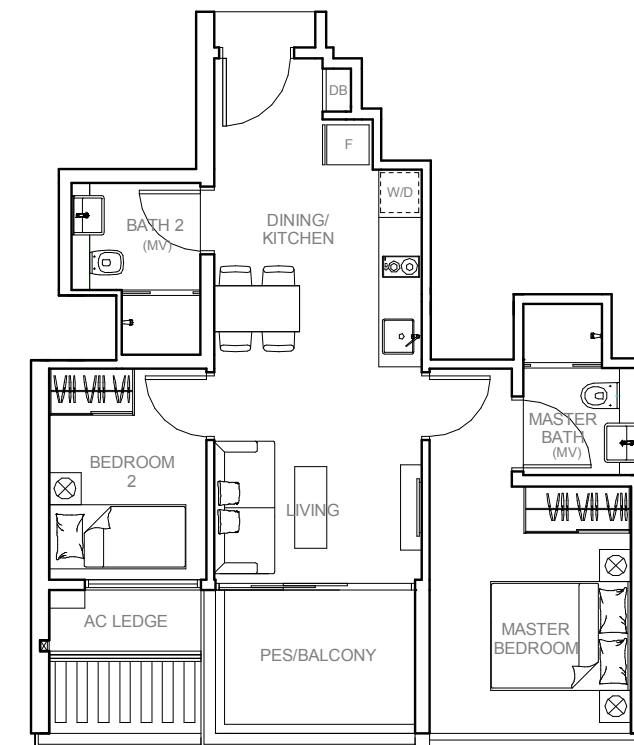
### TYPE B4

62 SQM / 667 SQFT  
INCLUSIVE OF 7 SQM PES / BALCONY  
& 3 SQM AC LEDGE

UNIT

**BLOCK 13**  
#01-40 (PES)  
#02-40 TO #04-40

**BLOCK 15**  
#01-51 (PES)\*  
#02-51 TO #04-51\*



0 1M 3M 5M

F FRIDGE W/D WASHER CUM DRYER  
DB DISTRIBUTION BOARD CABINET \* MIRRORED UNIT



## 2 BEDROOM

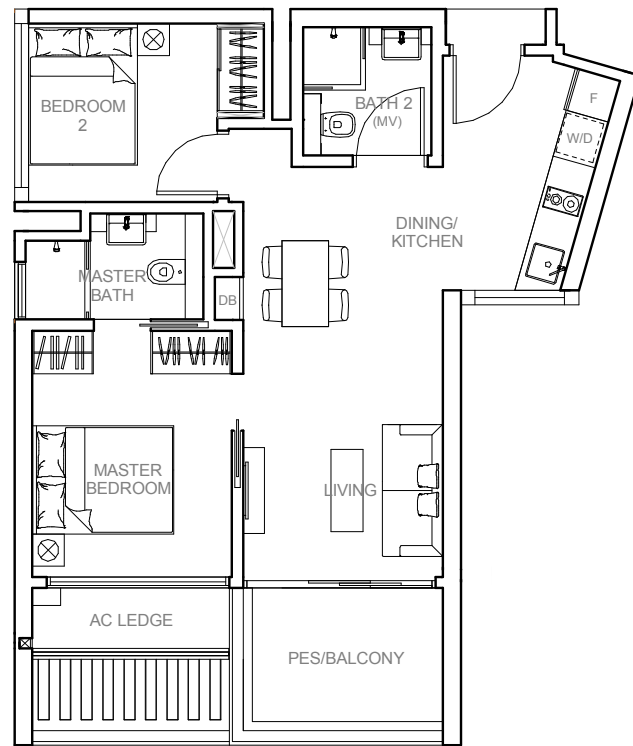
### TYPE B5

**65 SQM / 700 SQFT**  
INCLUSIVE OF 7 SQM PES / BALCONY  
& 3 SQM AC LEDGE

UNIT

**BLOCK 13**  
#01-44 (PES)\*  
#02-44 TO #04-44\*

**BLOCK 15**  
#01-47 (PES)  
#02-47 TO #04-47



### TYPE B6

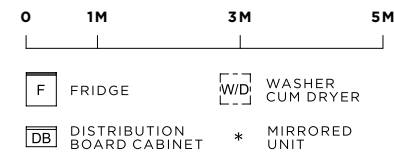
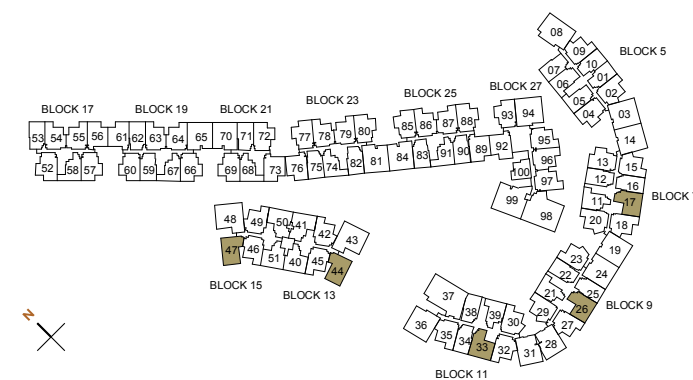
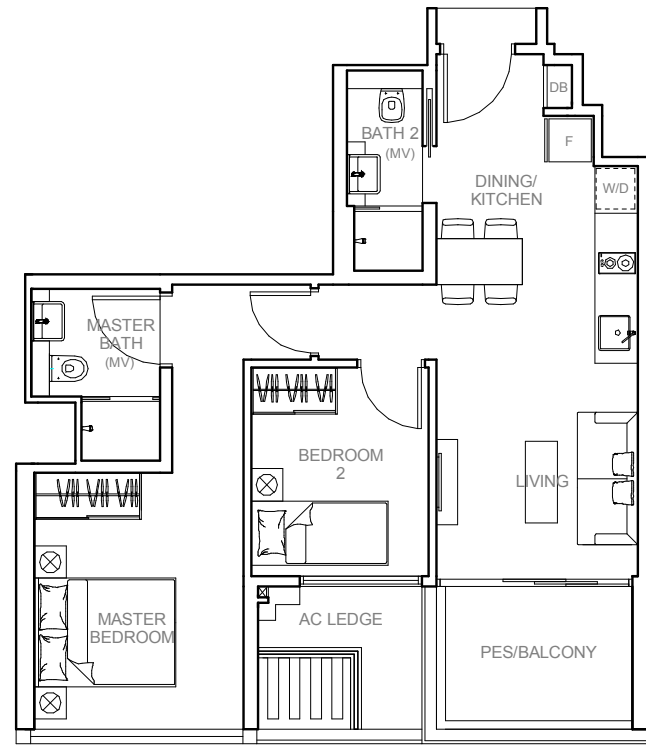
**67 SQM / 721 SQFT**  
INCLUSIVE OF 7 SQM PES / BALCONY  
& 4 SQM AC LEDGE

UNIT

**BLOCK 7**  
#01-17 (PES)  
#02-17 TO #04-17

**BLOCK 9**  
#01-26 (PES)  
#02-26 TO #04-26

**BLOCK 11**  
#01-33 (PES)\*  
#02-33 TO #04-33\*



## 2-BEDROOM + STUDY

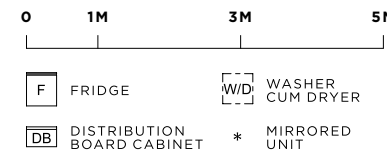
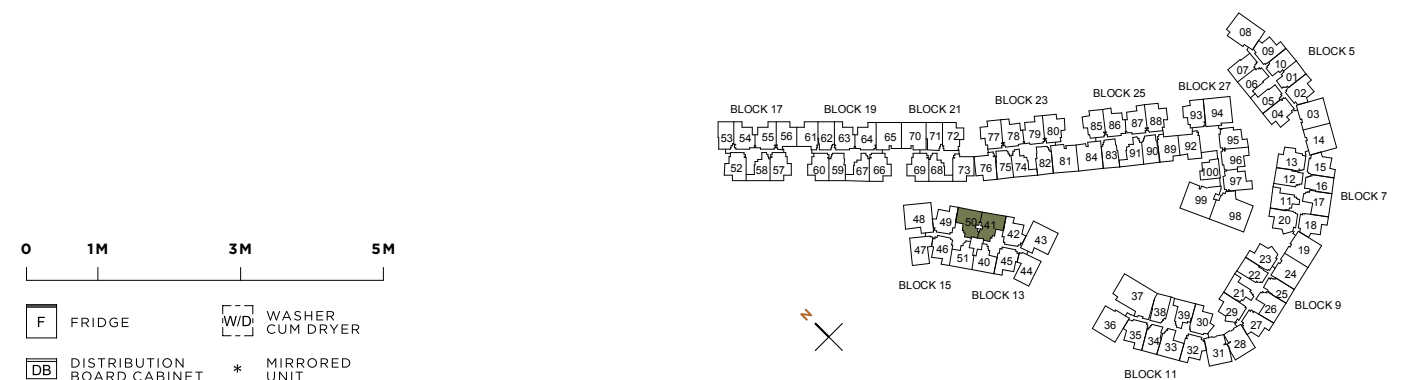
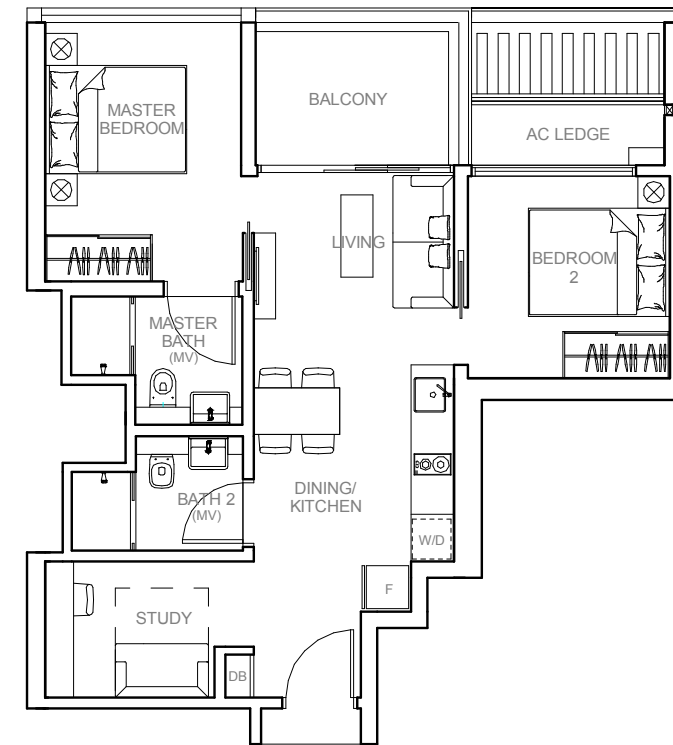
### TYPE B7

**68 SQM / 732 SQFT**  
INCLUSIVE OF 7 SQM BALCONY  
& 3 SQM AC LEDGE

UNIT

**BLOCK 13**  
#02-41 TO #04-41

**BLOCK 15**  
#02-50 TO #04-50\*



## 2-BEDROOM DUAL KEY

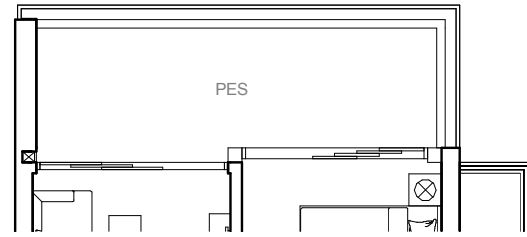
### TYPE DK1-G

70 SQM / 753 SQFT  
INCLUSIVE OF 13 SQM PES  
& 4 SQM AC LEDGE

UNIT

**BLOCK 13**  
#01-42

**BLOCK 15**  
#01-49\*



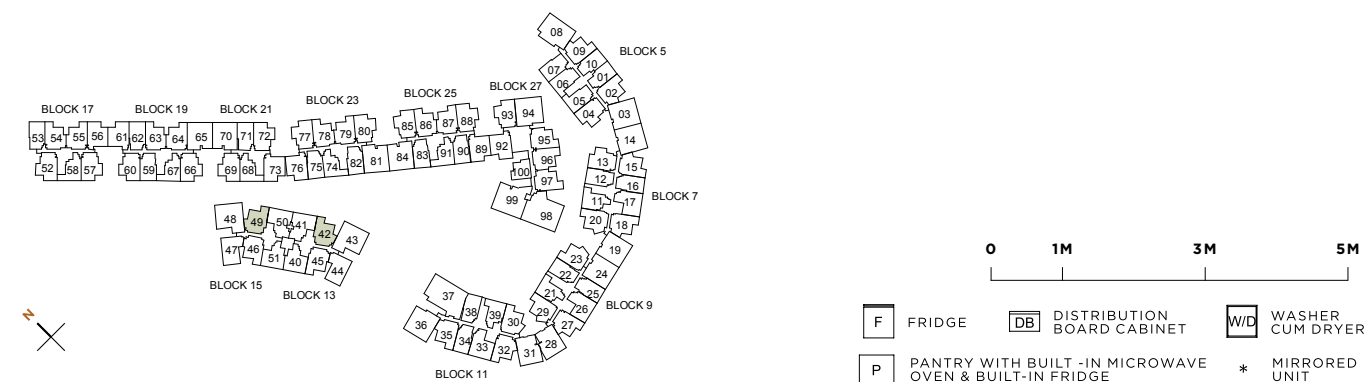
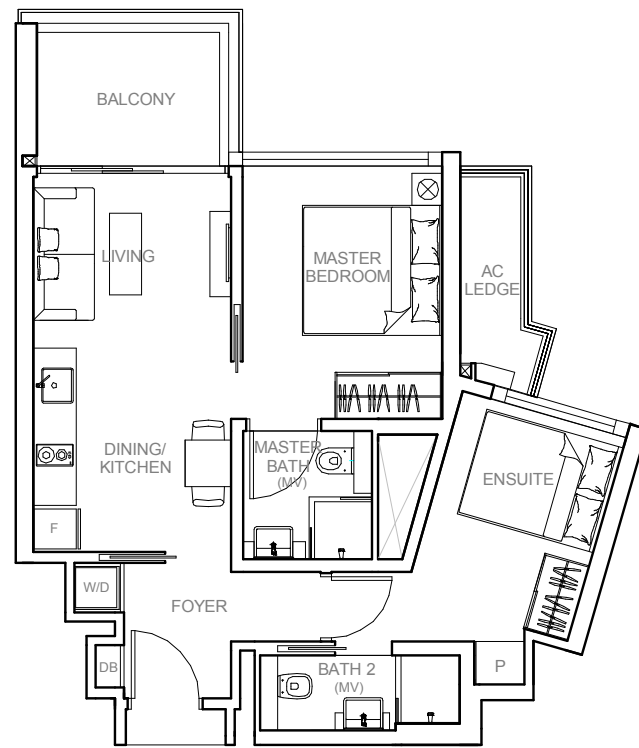
### TYPE DK1

64 SQM / 689 SQFT  
INCLUSIVE OF 7 SQM BALCONY  
& 4 SQM AC LEDGE

UNIT

**BLOCK 13**  
#02-42 TO #04-42

**BLOCK 15**  
#02-49 TO #04-49\*



All plans are subjected to amendments as may be approved by the relevant authorities. Floor areas are approximate measurements and are subjected to final survey. BP Approval No. A0712-01131-2013-BP01 dated 09/10/2014

## 2-BEDROOM DUAL KEY

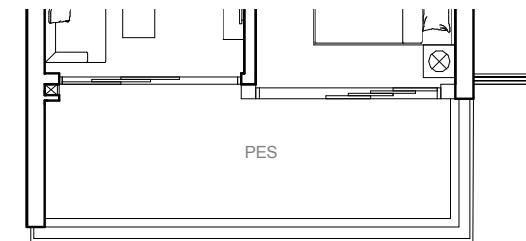
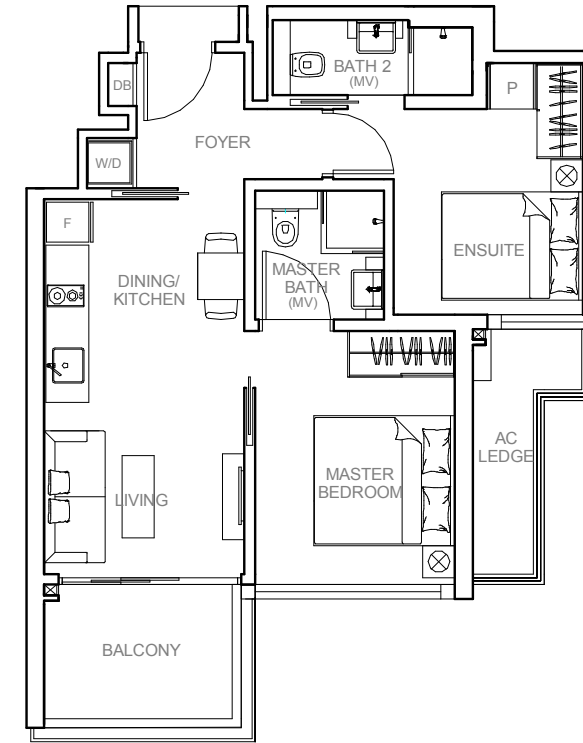
### TYPE DK2

64 SQM / 689 SQFT  
INCLUSIVE OF 7 SQM BALCONY  
& 5 SQM AC LEDGE

UNIT

**BLOCK 13**  
#02-45 TO #04-45

**BLOCK 15**  
#02-46 TO #04-46\*



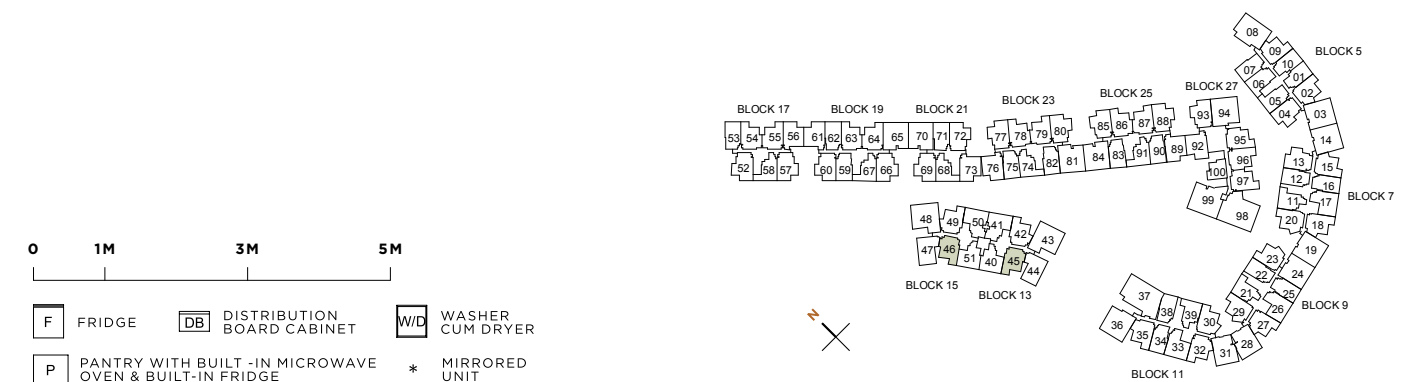
### TYPE DK2-G

70 SQM / 753 SQFT  
INCLUSIVE OF 13 SQM PES  
& 5 SQM AC LEDGE

UNIT

**BLOCK 13**  
#01-45

**BLOCK 15**  
#01-46\*



All plans are subjected to amendments as may be approved by the relevant authorities. Floor areas are approximate measurements and are subjected to final survey. BP Approval No. A0712-01131-2013-BP01 dated 09/10/2014

# 2-BEDROOM DUAL KEY

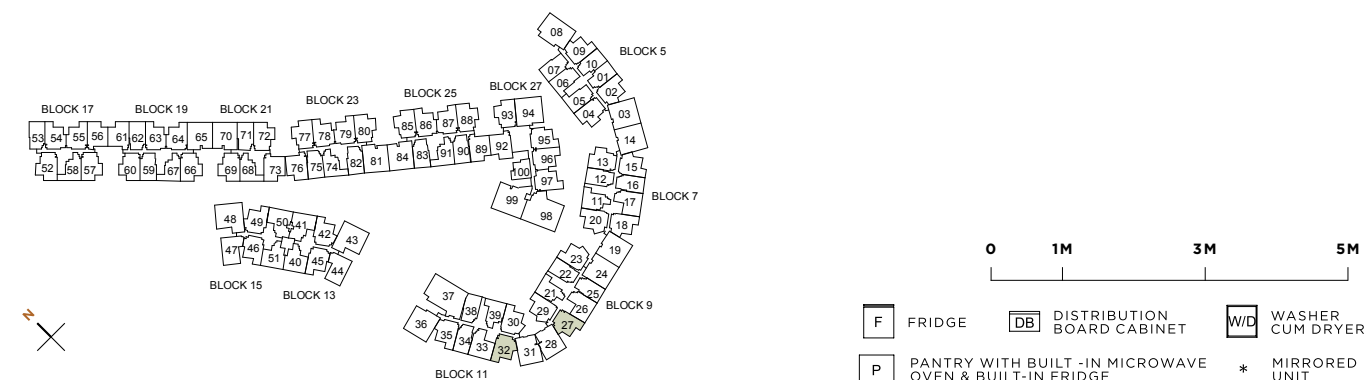
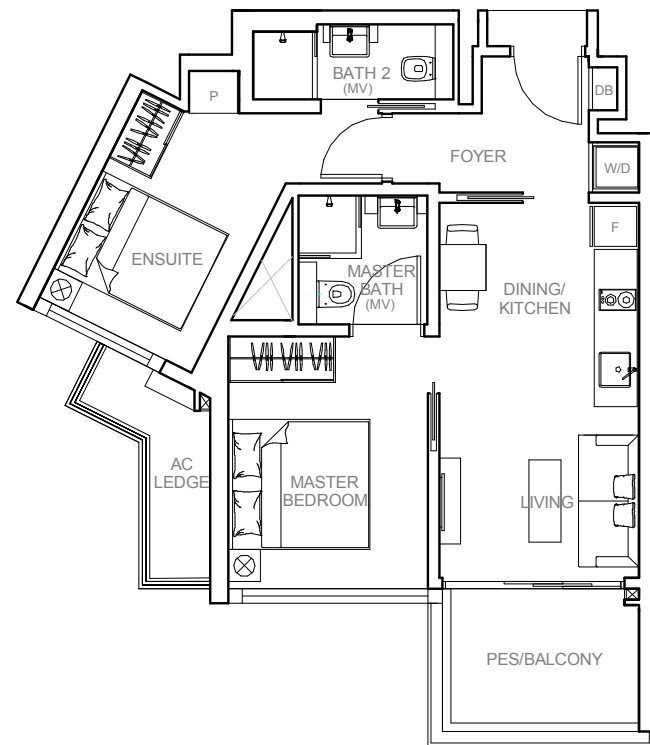
## TYPE DK3

65 SQM / 700 SQFT  
INCLUSIVE OF 7 SQM PES / BALCONY  
& 4 SQM AC LEDGE

UNIT

**BLOCK 9**  
#01-27 (PES)  
#02-27 TO #04-27

**BLOCK 11**  
#01-32 (PES)\*  
#02-32 TO #04-32\*



# 2-BEDROOM DUAL KEY

## TYPE DK4

65 SQM / 700 SQFT  
INCLUSIVE OF 7 SQM PES / BALCONY  
& 3 SQM AC LEDGE

UNIT

**BLOCK 17**  
#02-52 (PES)\*  
#03-52\*, #04-52\*  
#02-57 (PES)  
#03-57, #04-57

**BLOCK 19**  
#02-60 (PES)\*  
#03-60 TO #06-60\*  
#02-66 (PES)  
#03-66 TO #06-66

**BLOCK 21**  
#01-69 (PES)\*  
#02-69 TO #07-69\*  
#01-72 (PES)\*  
#02-72 TO #07-72\*

**BLOCK 23**  
#01-77 (PES)  
#02-77 TO #06-77  
#01-80 (PES)\*  
#02-80 TO #06-80\*

**BLOCK 25**  
#01-85 (PES)  
#02-85 TO #06-85  
#01-88 (PES)\*  
#02-88 TO #06-88\*

**BLOCK 27**  
#01-93 (PES)  
#02-93 TO #06-93

SCREENING



**BLOCK 21**  
#07-69\*

SCREENING

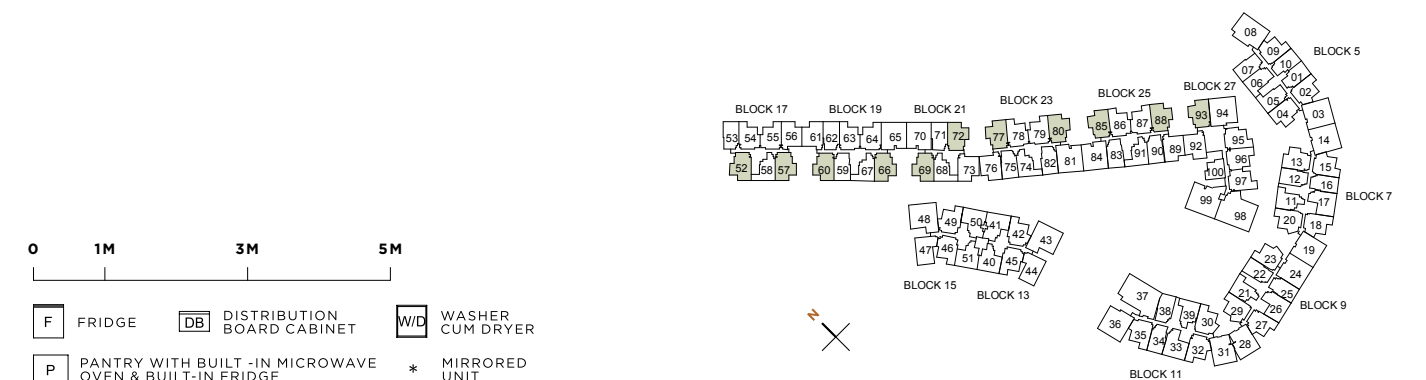
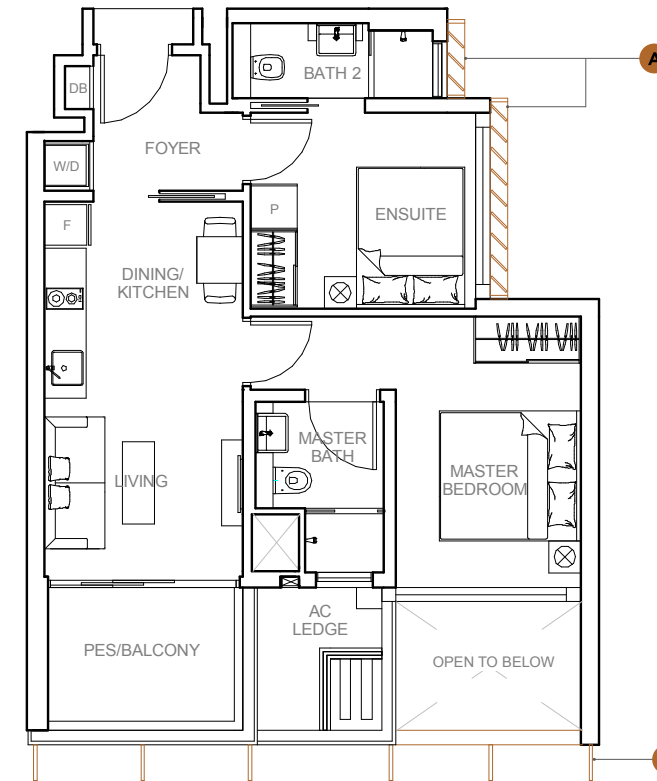


**BLOCK 21**  
#07-69\*  
#07-72\*

**BLOCK 23**  
#06-77  
#06-80\*

**BLOCK 25**  
#06-85  
#06-88\*

**BLOCK 27**  
#06-93





## 2-BEDROOM DUAL KEY

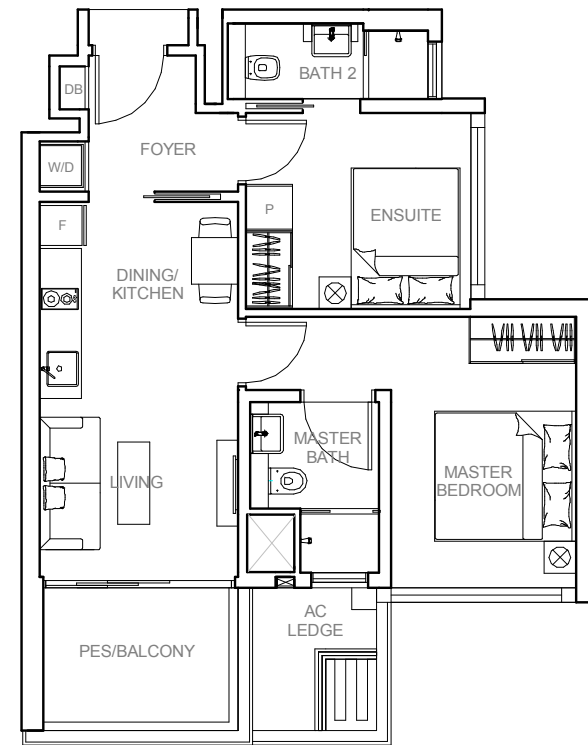
### TYPE DK4a

65 SQM / 700 SQFT  
INCLUSIVE OF 7 SQM PES / BALCONY  
& 3 SQM AC LEDGE

UNIT

**BLOCK 5**  
#01-04 (PES)  
#02-04 TO #05-04

**BLOCK 7**  
#01-13 (PES)\*  
#02-13 TO #04-13\*



### TYPE DK5

65 SQM / 700 SQFT  
INCLUSIVE OF 7 SQM PES / BALCONY  
& 4 SQM AC LEDGE

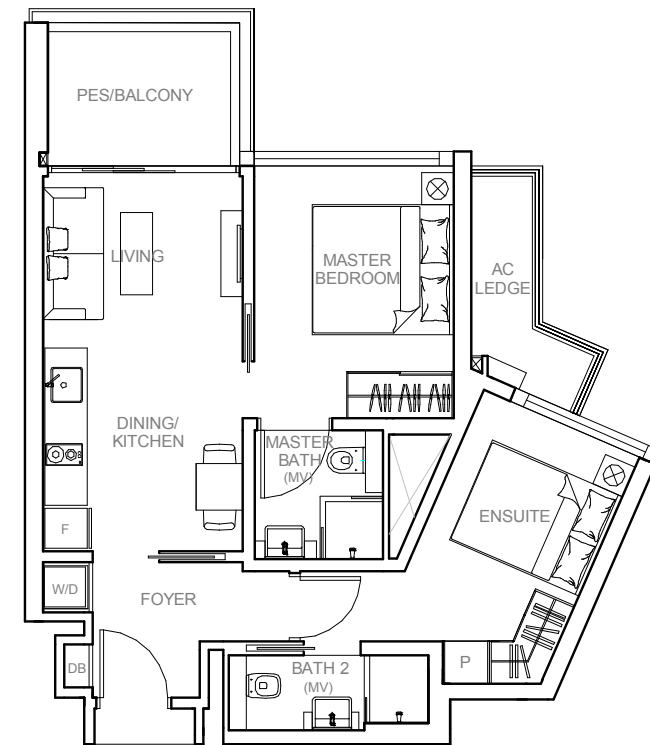
UNIT

**BLOCK 5**  
#01-02 (PES)  
#02-02 TO #05-02

**BLOCK 7**  
#01-15 (PES)\*  
#02-15 TO #04-15\*  
#01-18 (PES)  
#02-18 TO #04-18  
#01-20 (PES)\*  
#02-20 TO #04-20\*

**BLOCK 9**  
#01-23 (PES)  
#02-23 TO #04-23  
#01-29 (PES)\*  
#02-29 TO #04-29\*

**BLOCK 11**  
#01-30 (PES)  
#02-30 TO #04-30



## 2-BEDROOM DUAL KEY

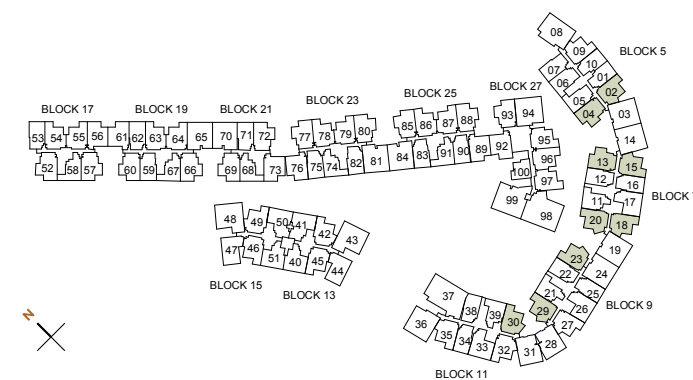
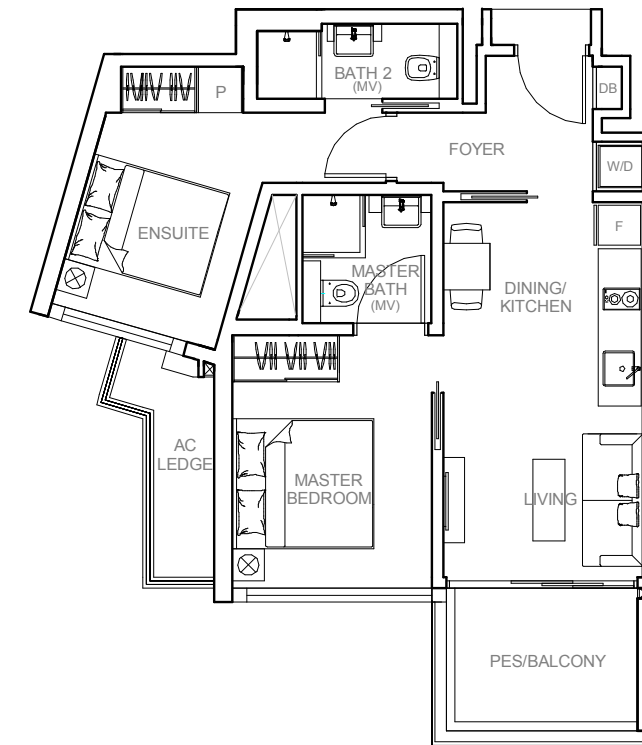
### TYPE DK6

65 SQM / 700 SQFT  
INCLUSIVE OF 7 SQM PES / BALCONY  
& 4 SQM AC LEDGE

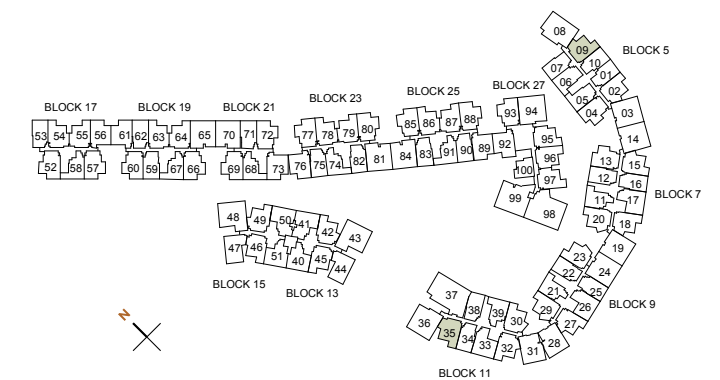
UNIT

**BLOCK 5**  
#01-09 (PES)\*  
#02-09 TO #05-09\*

**BLOCK 11**  
#01-35 (PES)  
#02-35 TO #04-35



F FRIDGE DB DISTRIBUTION BOARD CABINET W/D WASHER CUM DRYER  
P PANTRY WITH BUILT-IN MICROWAVE OVEN & BUILT-IN FRIDGE \* MIRRORED UNIT



F FRIDGE DB DISTRIBUTION BOARD CABINET W/D WASHER CUM DRYER  
P PANTRY WITH BUILT-IN MICROWAVE OVEN & BUILT-IN FRIDGE \* MIRRORED UNIT

## 2-BEDROOM DUAL KEY

### TYPE DK7

65 SQM / 700 SQFT  
INCLUSIVE OF 7 SQM PES / BALCONY  
& 3 SQM AC LEDGE

UNIT

**BLOCK 17**  
#01-56 (PES)\*  
#02-56 TO #04-56\*

**BLOCK 19**  
#01-61 (PES)  
#02-61 TO #06-61

**BLOCK 21**  
#01-73 (PES)  
#02-73 TO #07-73

**BLOCK 23**  
#01-76 (PES)\*  
#02-76 TO #06-76\*

**BLOCK 25**  
#01-89 (PES)  
#02-89 TO #06-89

**BLOCK 27**  
#01-92 (PES)\*  
#02-92 TO #06-92\*

SCREENING

**A**

**BLOCK 21**  
#07-73

**BLOCK 23**  
#06-76\*

**BLOCK 25**  
#06-89

WALL

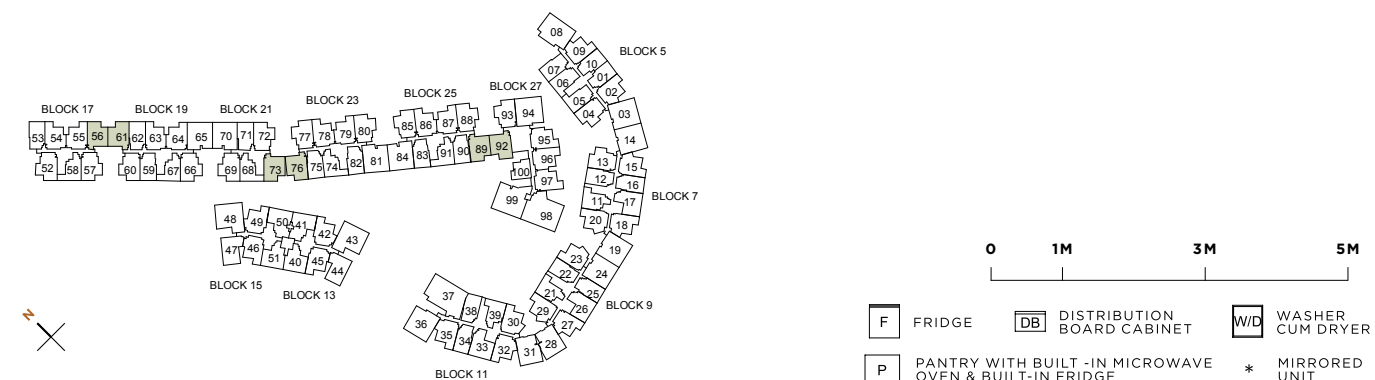
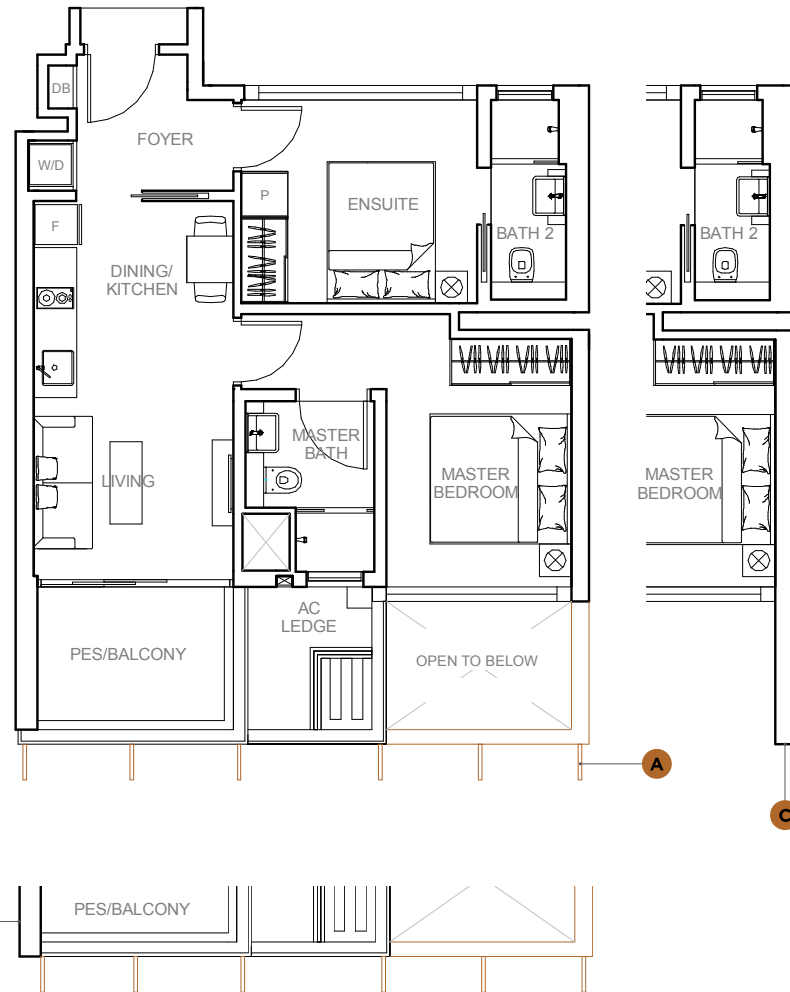
**B**

**BLOCK 27**  
#06-92\*

WALL

**C**

**BLOCK 19**  
#05-61  
#06-61



All plans are subjected to amendments as may be approved by the relevant authorities. Floor areas are approximate measurements and are subjected to final survey. BP Approval No. A0712-01131-2013-BP01 dated 09/10/2014

## 2-BEDROOM DUAL KEY

### TYPE DK8

66 SQM / 710 SQFT  
INCLUSIVE OF 7 SQM PES / BALCONY  
& 5 SQM AC LEDGE

UNIT

**BLOCK 17**  
#01-54 (PES)  
#02-54 TO #04-54  
#01-55 (PES)\*  
#02-55 TO #04-55\*

**BLOCK 19**  
#01-63 (PES)  
#02-63 TO #06-63  
#01-64 (PES)\*  
#02-64 TO #06-64\*

**BLOCK 23**  
#01-78 (PES)  
#02-78 TO #06-78  
#01-79 (PES)\*  
#02-79 TO #06-79\*

**BLOCK 25**  
#01-86 (PES)  
#02-86 TO #06-86  
#01-87 (PES)\*  
#02-87 TO #06-87\*

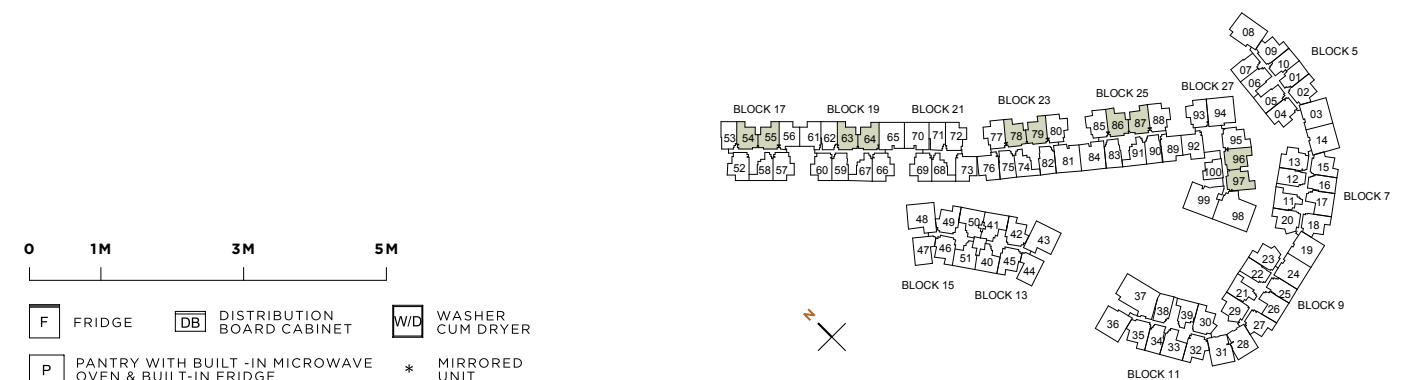
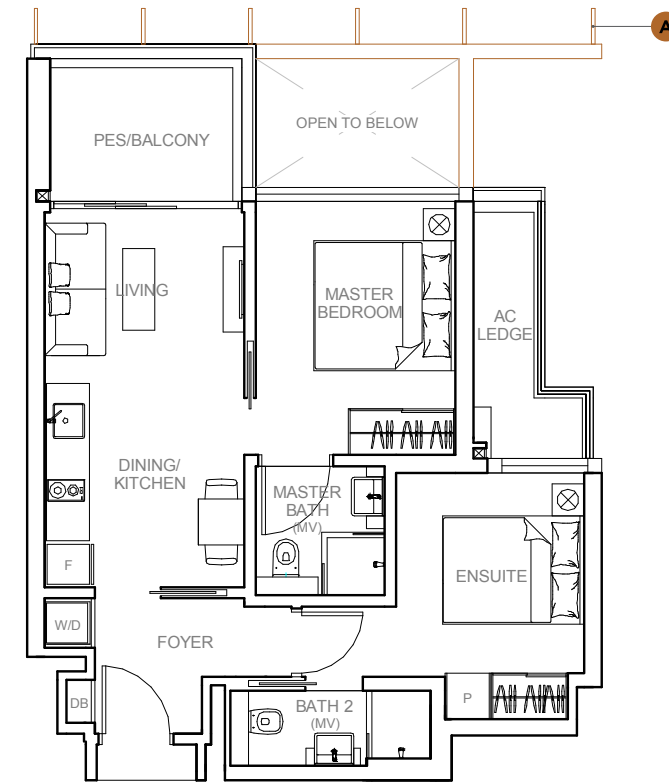
**BLOCK 27**  
#01-96 (PES)  
#02-96 TO #06-96  
#01-97 (PES)\*  
#02-97 TO #06-97\*

SCREENING

**A**

**BLOCK 23**  
#06-78  
#06-79\*

**BLOCK 25**  
#06-86  
#06-87\*



All plans are subjected to amendments as may be approved by the relevant authorities. Floor areas are approximate measurements and are subjected to final survey. BP Approval No. A0712-01131-2013-BP01 dated 09/10/2014

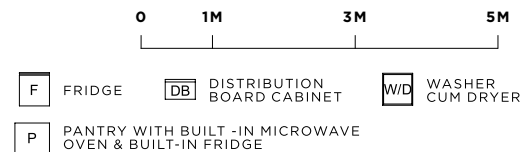
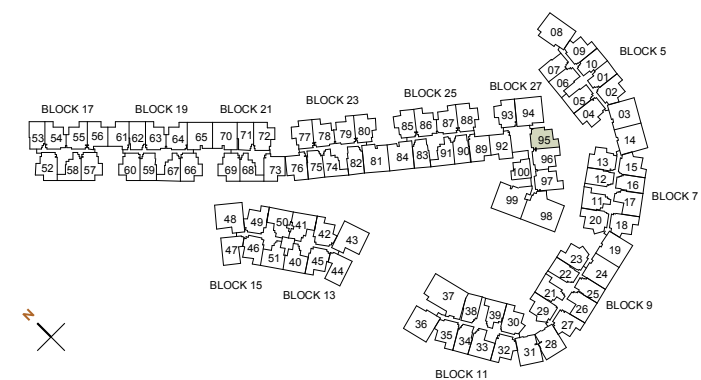
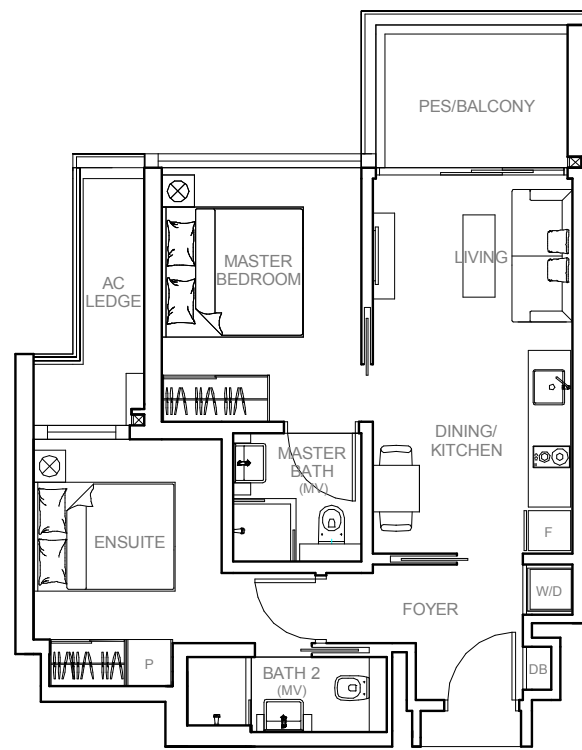
# 2-BEDROOM DUAL KEY

## TYPE DK8a

66 SQM / 710 SQFT  
INCLUSIVE OF 7 SQM PES / BALCONY  
& 5 SQM AC LEDGE

UNIT

**BLOCK 27**  
#01-95 (PES)  
#02-95 TO #06-95



# 3-BEDROOM

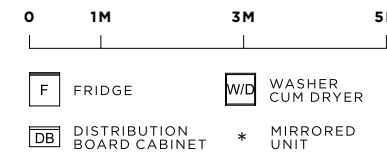
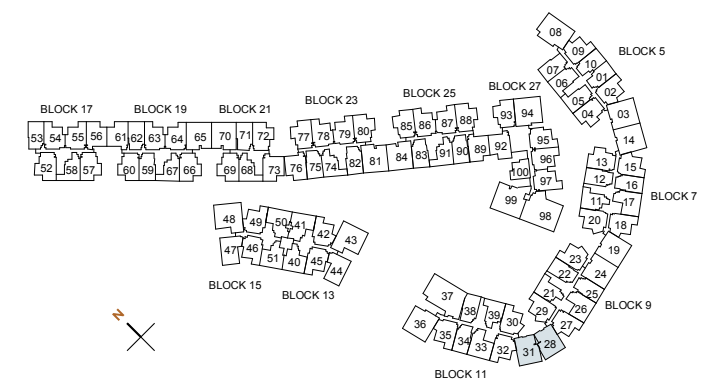
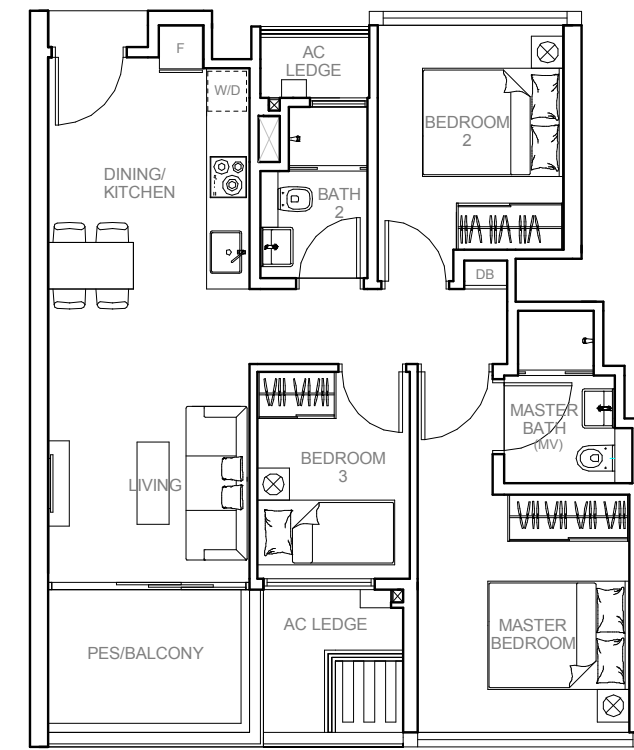
## TYPE C1

79 SQM / 850 SQFT  
INCLUSIVE OF 7 SQM PES / BALCONY  
& 5 SQM AC LEDGE

UNIT

**BLOCK 9**  
#01-28 (PES)\*  
#02-28 TO #04-28\*

**BLOCK 11**  
#01-31 (PES)  
#02-31 TO #04-31





# 3-BEDROOM

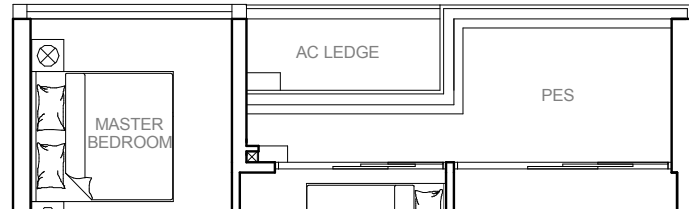
## TYPE C2-G

91 SQM / 980 SQFT  
INCLUSIVE OF 11 SQM PES  
& 5 SQM AC LEDGE

UNIT

**BLOCK 19** **BLOCK 23**  
#01-65\* #01-81

**BLOCK 21** **BLOCK 25**  
#01-70 #01-84\*



## TYPE C2

89 SQM / 958 SQFT  
INCLUSIVE OF 8 SQM BALCONY  
& 6 SQM AC LEDGE

UNIT

**BLOCK 19**  
#02-65 TO #06-65\*

**BLOCK 21**  
#02-70 TO #07-70

**BLOCK 23**  
#02-81 TO #06-81

**BLOCK 25**  
#02-84 TO #06-84\*

SCREENING

**A**

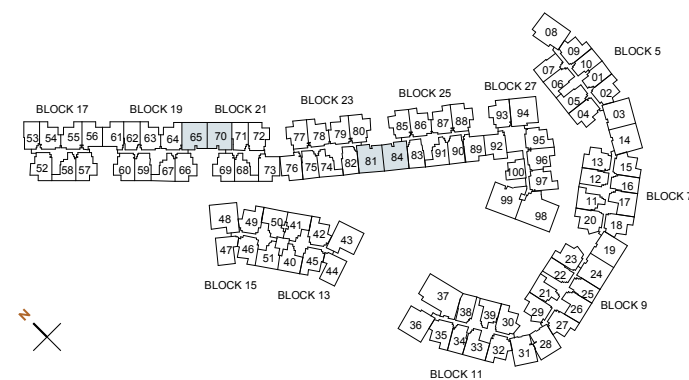
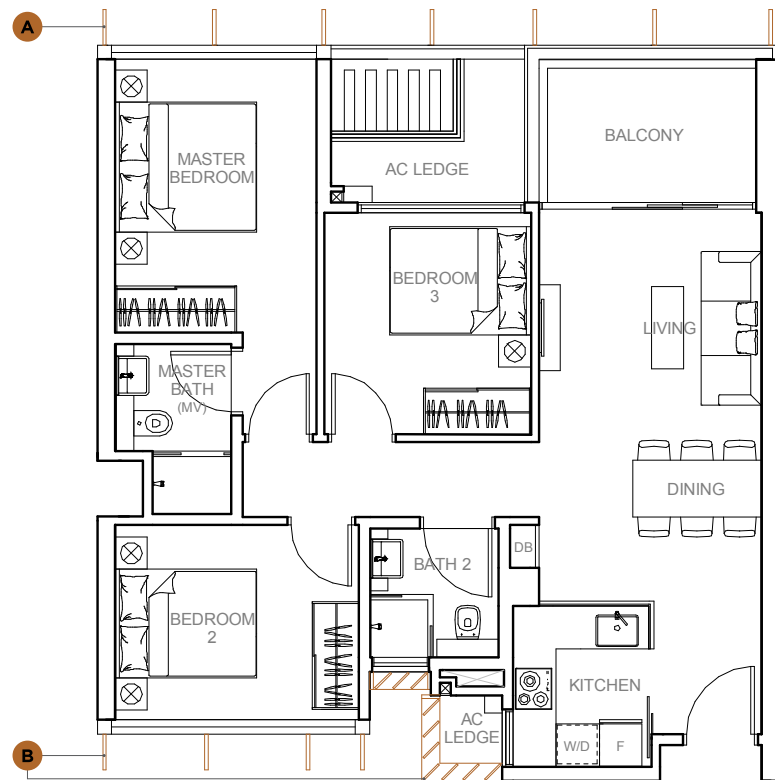
SCREENING

**B**

**BLOCK 21** **BLOCK 21**  
#07-70 #07-70

**BLOCK 23**  
#06-81

**BLOCK 25**  
#06-84\*



0 1M 3M 5M

F FRIDGE W/D WASHER CUM DRYER  
DB DISTRIBUTION BOARD CABINET \* MIRRORED UNIT

# 3-BEDROOM + UTILITY

## TYPE C3

94 SQM / 1012 SQFT  
INCLUSIVE OF 8 SQM BALCONY  
& 6 SQM AC LEDGE

UNIT

**BLOCK 5**  
#02-03 TO #05-03\*

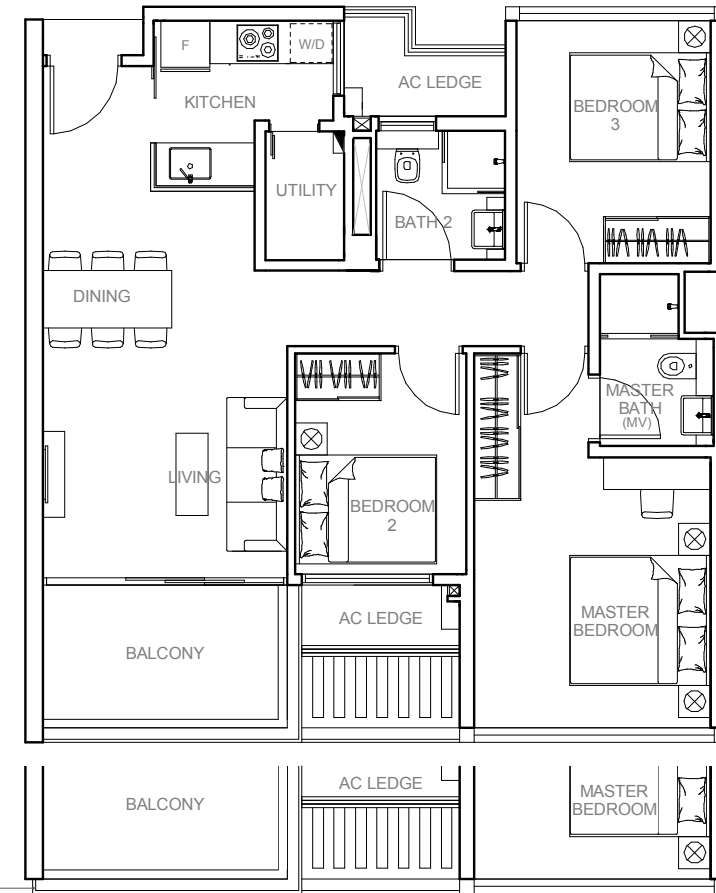
**BLOCK 7**  
#02-14 TO #04-14  
#02-19 TO #04-19\*

**BLOCK 9**  
#02-24 TO #04-24

RAILING

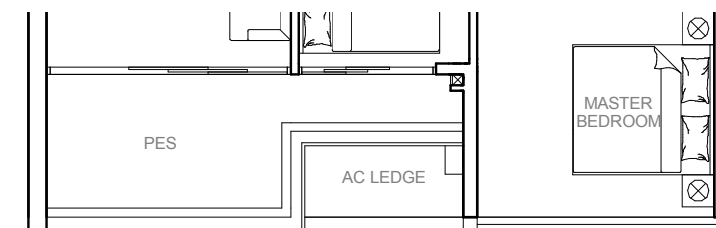
**A**

**BLOCK 9**  
#02-24 TO #04-24



TYPE C3

**A**



TYPE C3-G

**B**

## TYPE C3-G

97 SQM / 1044 SQFT  
INCLUSIVE OF 11 SQM PES  
& 6 SQM AC LEDGE

UNIT

**BLOCK 5** **BLOCK 9**  
#01-03\* #01-24

**BLOCK 7**  
#01-14  
#01-19\*

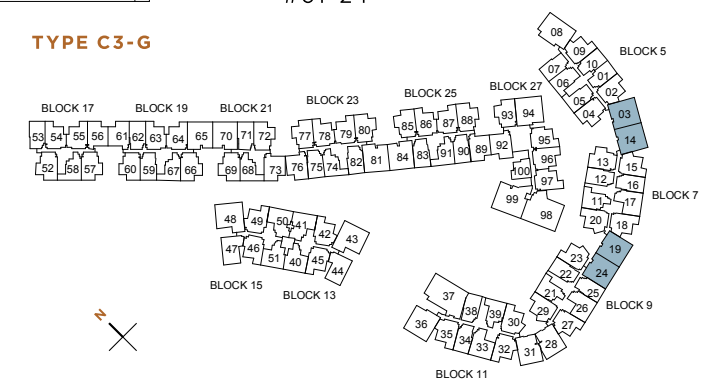
RAILING

**B**

**BLOCK 9**  
#01-24

0 1M 3M 5M

F FRIDGE W/D WASHER CUM DRYER  
DB DISTRIBUTION BOARD CABINET \* MIRRORED UNIT



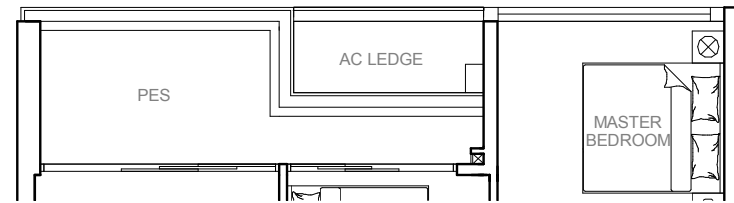
## 3-BEDROOM + UTILITY

### TYPE C4-G

99 SQM / 1066 SQFT  
INCLUSIVE OF 11 SQM PES  
& 7 SQM AC LEDGE

UNIT

**BLOCK 27**  
#01-94



### TYPE C4

95 SQM / 1023 SQFT  
INCLUSIVE OF 8 SQM BALCONY  
& 6 SQM AC LEDGE

UNIT

**BLOCK 27**  
#02-94 TO #06-94

SCREENING

**A**

**BLOCK 27**  
#06-94



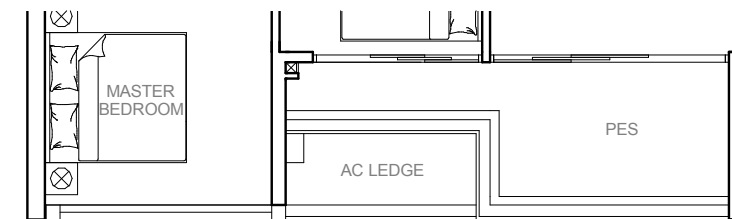
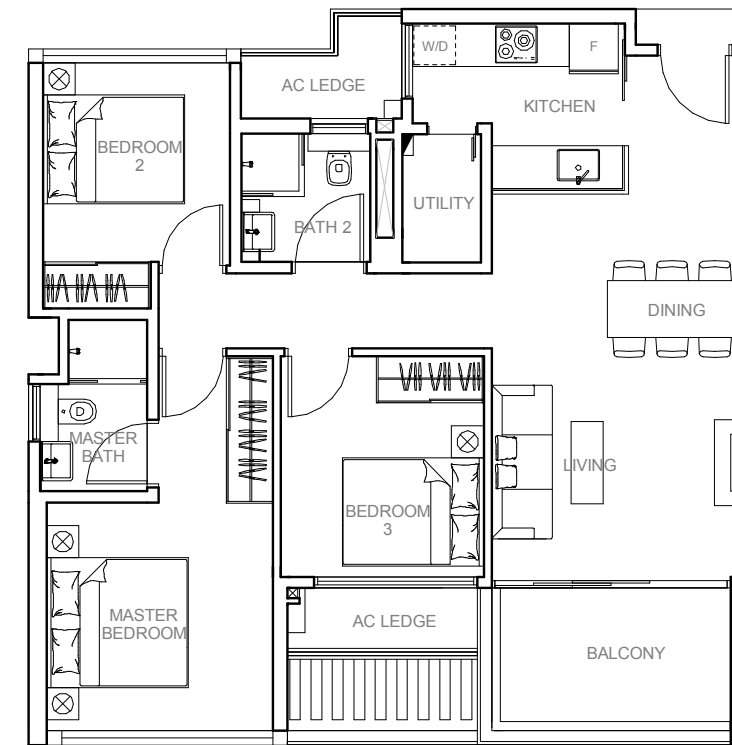
## 3-BEDROOM + UTILITY

### TYPE C5

95 SQM / 1023 SQFT  
INCLUSIVE OF 8 SQM BALCONY  
& 6 SQM AC LEDGE

UNIT

**BLOCK 11**  
#02-36 TO #04-36

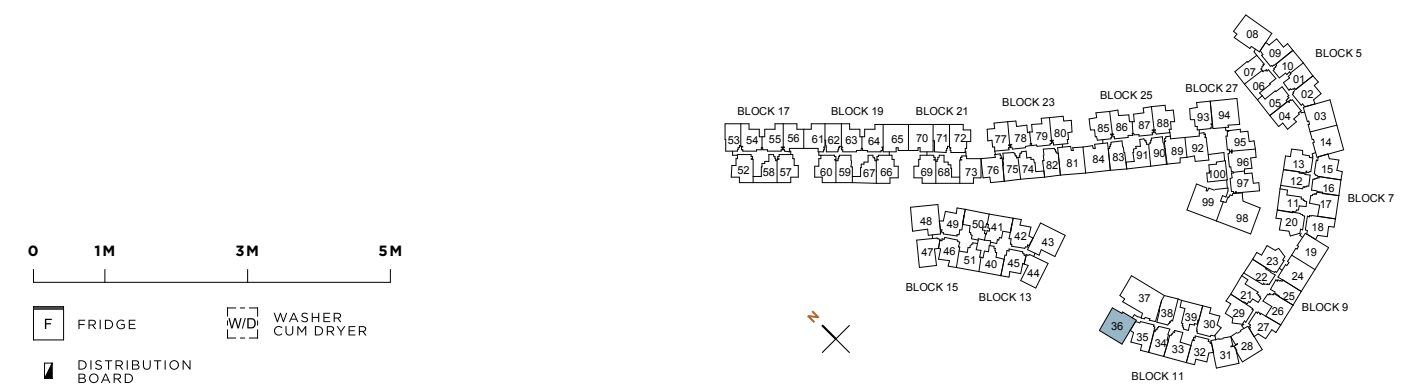
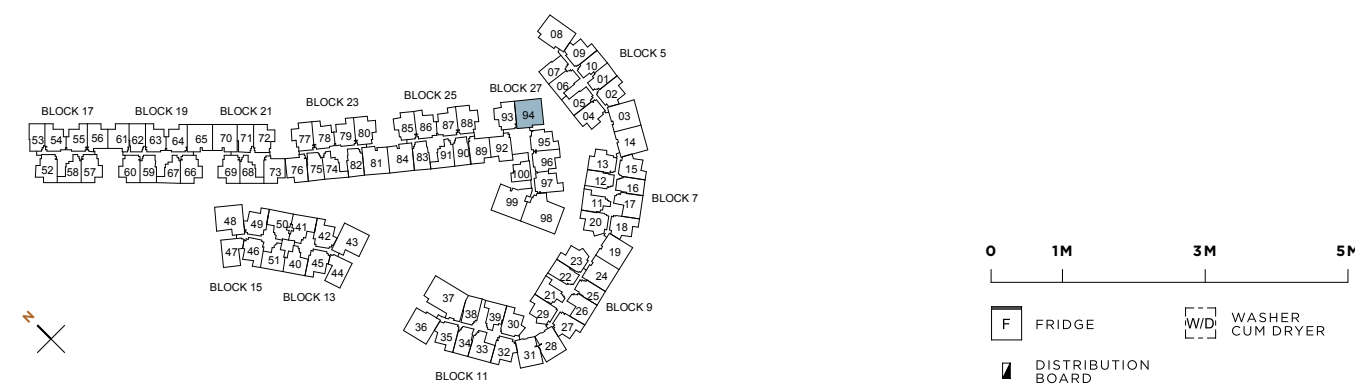


### TYPE C5-G

98 SQM / 1055 SQFT  
INCLUSIVE OF 11 SQM PES  
& 6 SQM AC LEDGE

UNIT

**BLOCK 11**  
#01-36



# 3-BEDROOM + UTILITY

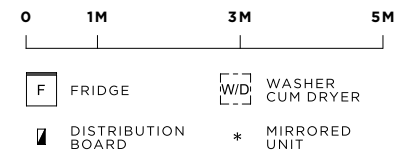
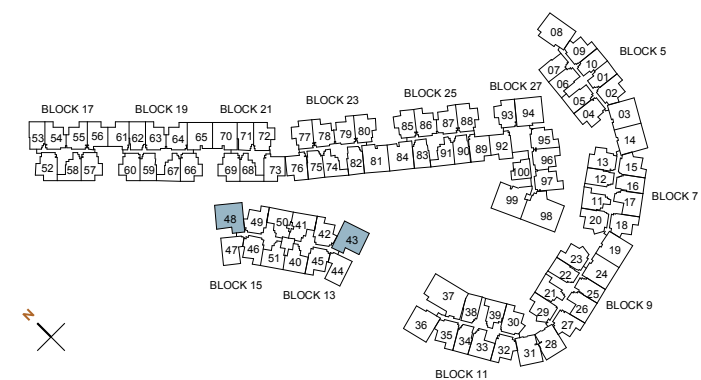
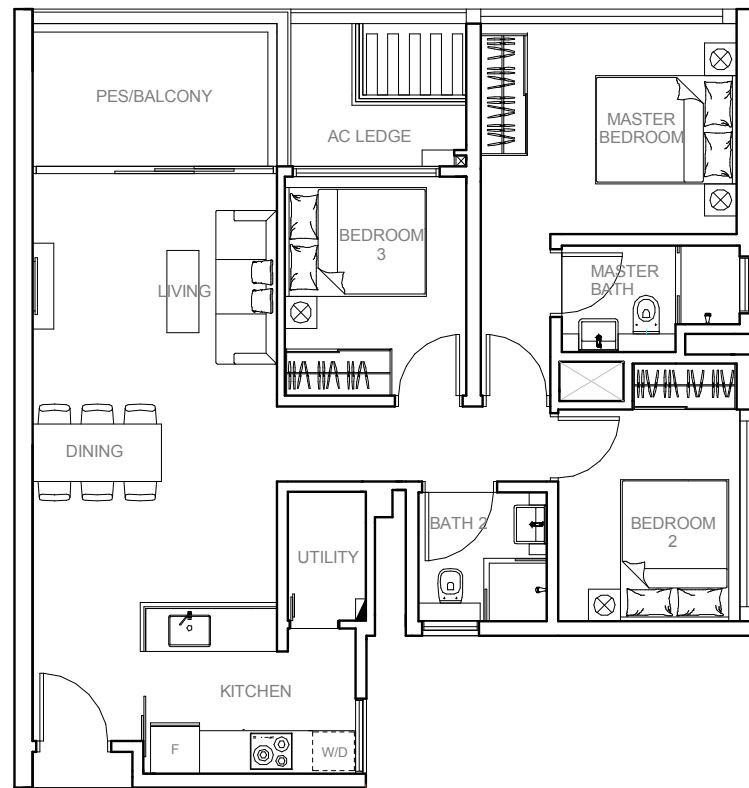
## TYPE C6

95 SQM / 1023 SQFT  
INCLUSIVE OF 8 SQM PES / BALCONY  
& 4 SQM AC LEDGE

UNIT

**BLOCK 13**  
#01-43 (PES)  
#02-43 TO #04-43

**BLOCK 15**  
#01-48 (PES)\*  
#02-48 TO #04-48\*



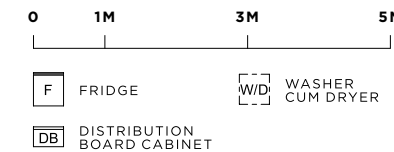
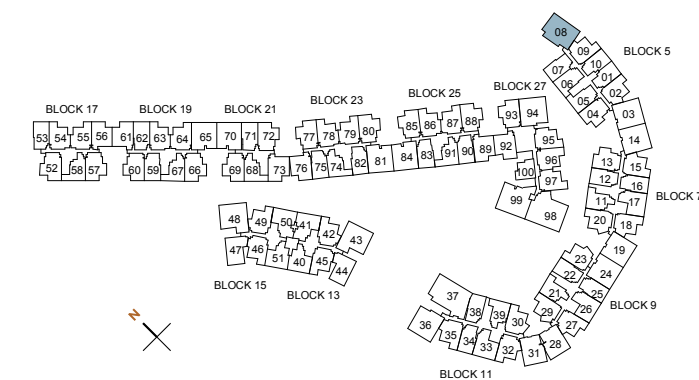
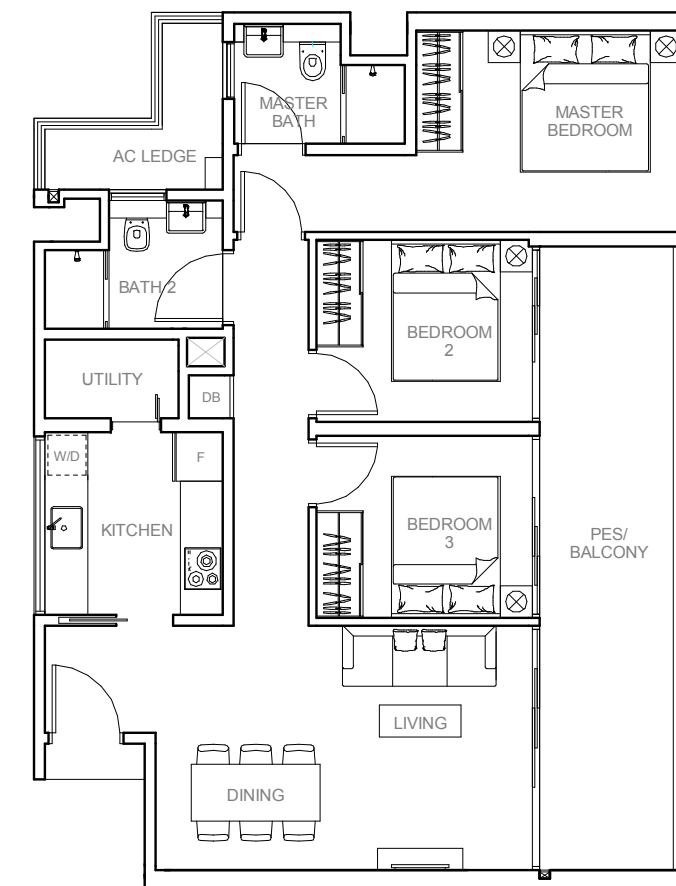
# 3-BEDROOM + UTILITY

## TYPE C7

105 SQM / 1130 SQFT  
INCLUSIVE OF 20 SQM PES / BALCONY  
& 5 SQM AC LEDGE

UNIT

**BLOCK 5**  
#01-08 (PES)  
#02-08 TO #05-08





# 3-BEDROOM + UTILITY + PRIVATE LIFT

## TYPE C8

122 SQM / 1313 SQFT  
INCLUSIVE OF 19 SQM PES / BALCONY  
& 6 SQM AC LEDGE

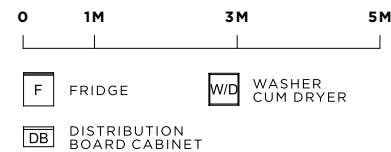
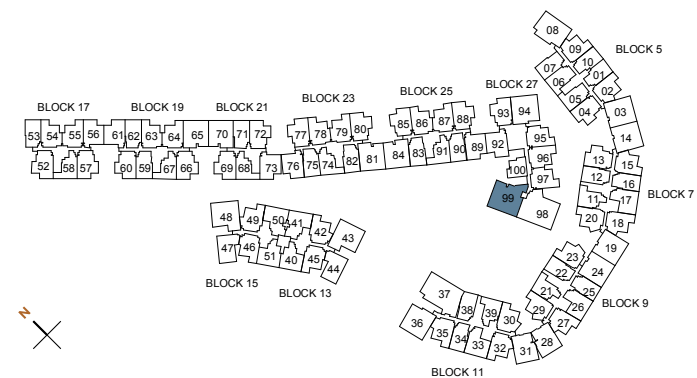
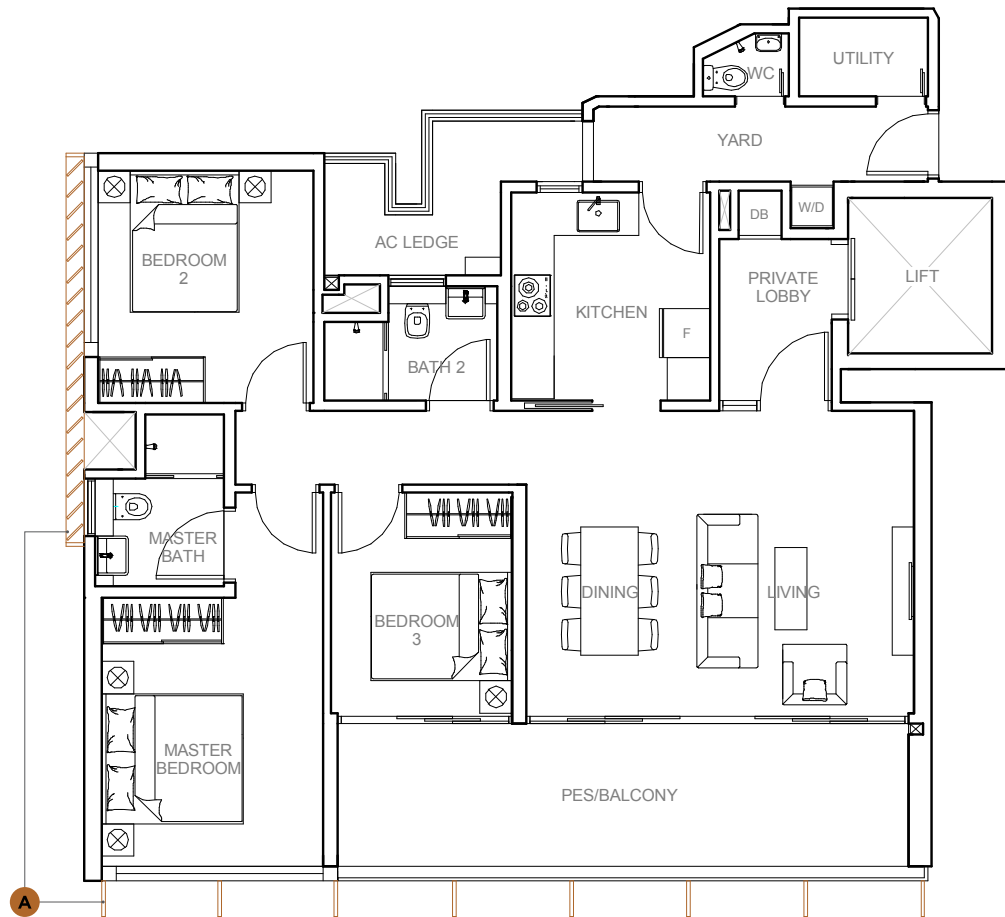
UNIT

**BLOCK 27**  
#01-99 (PES)  
#02-99 TO #06-99

SCREENING

**A**

**BLOCK 27**  
#06-99



All plans are subjected to amendments as may be approved by the relevant authorities. Floor areas are approximate measurements and are subjected to final survey. BP Approval No. A0712-01131-2013-BP01 dated 09/10/2014

# 4-BEDROOM + UTILITY + PRIVATE LIFT

## TYPE D1

143 SQM / 1539 SQFT  
INCLUSIVE OF 20 SQM PES / BALCONY  
& 4 SQM AC LEDGE

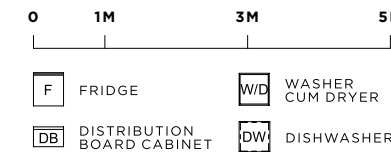
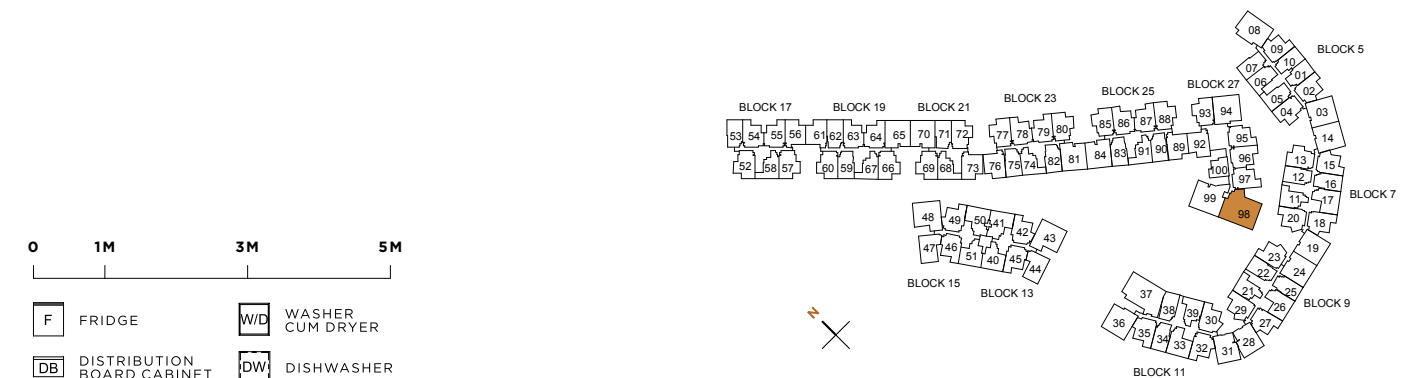
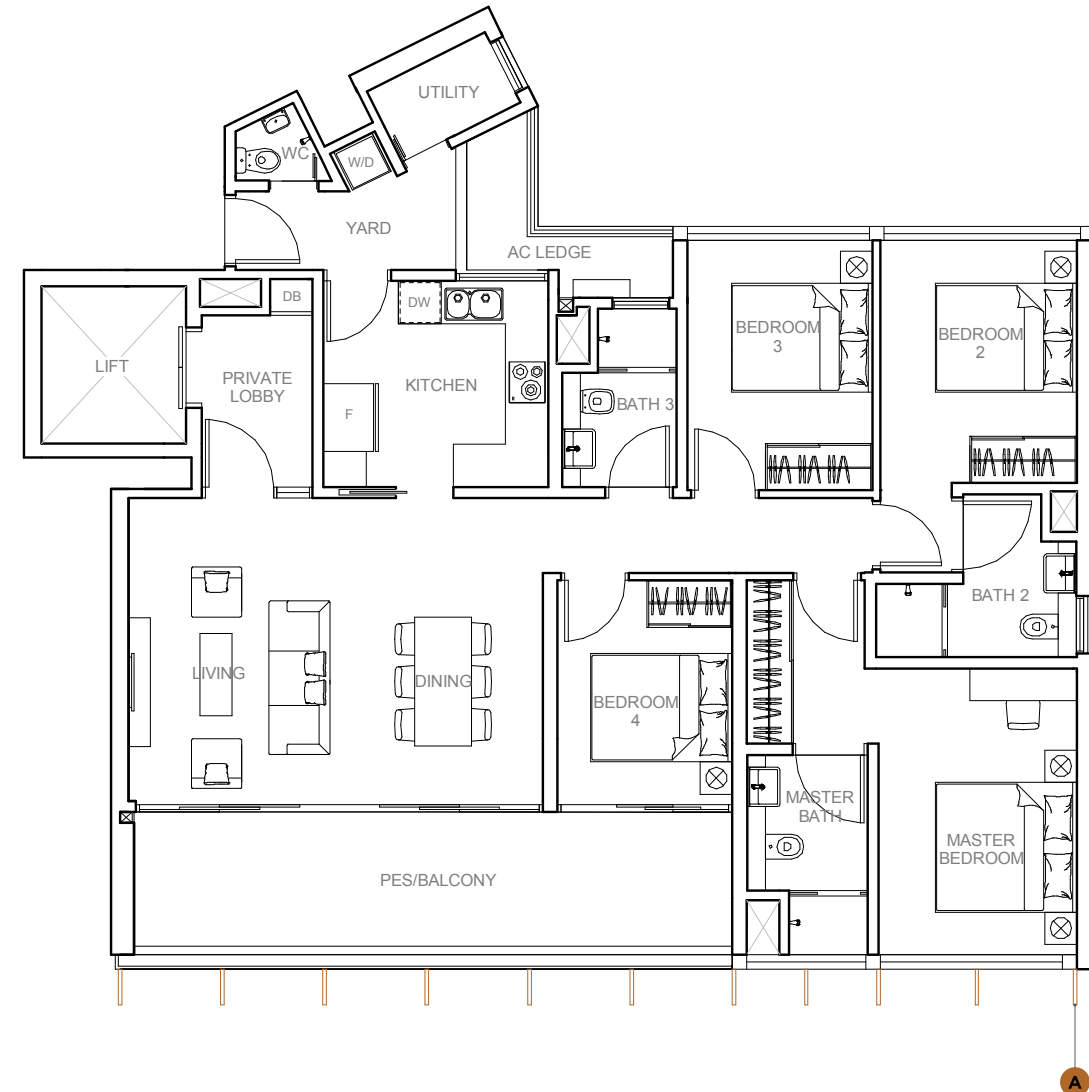
UNIT

**BLOCK 27**  
#01-98 (PES)  
#02-98 TO #06-98

SCREENING

**A**

**BLOCK 27**  
#06-98



All plans are subjected to amendments as may be approved by the relevant authorities. Floor areas are approximate measurements and are subjected to final survey. BP Approval No. A0712-01131-2013-BP01 dated 09/10/2014

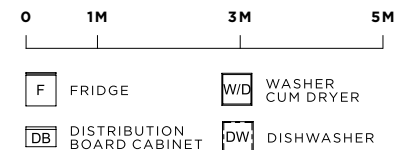
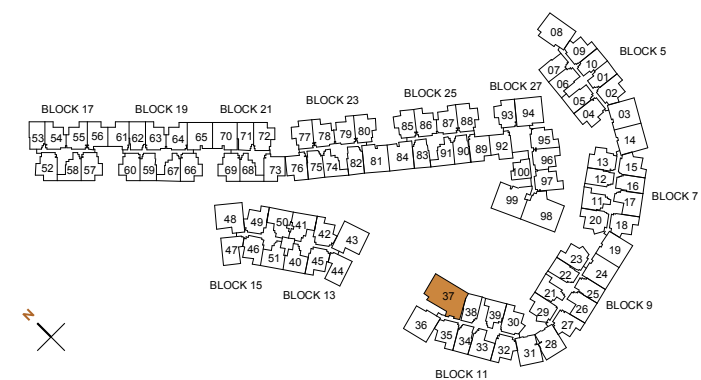
# 4-BEDROOM + UTILITY + PRIVATE LIFT

## TYPE D2

143 SQM / 1539 SQFT  
INCLUSIVE OF 25 SQM PES / BALCONY  
& 4 SQM AC LEDGE

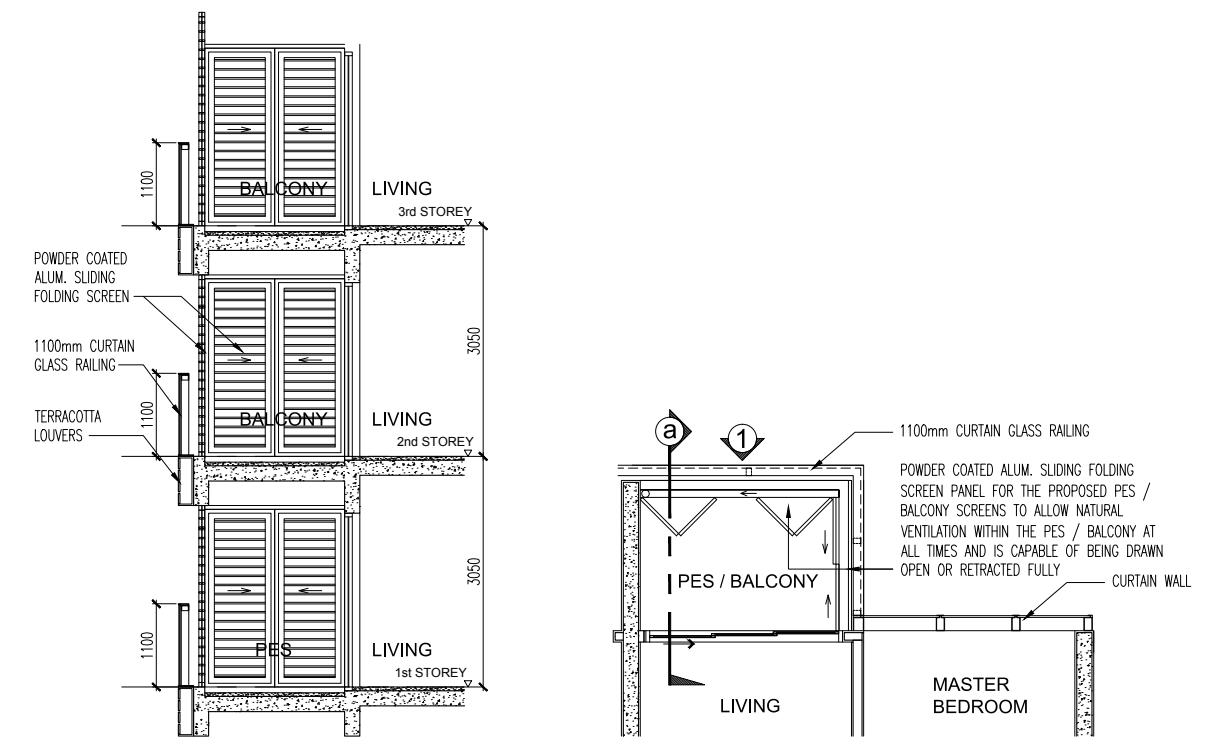
UNIT

**BLOCK 11**  
#01-37 (PES)  
#02-37 TO #04-37



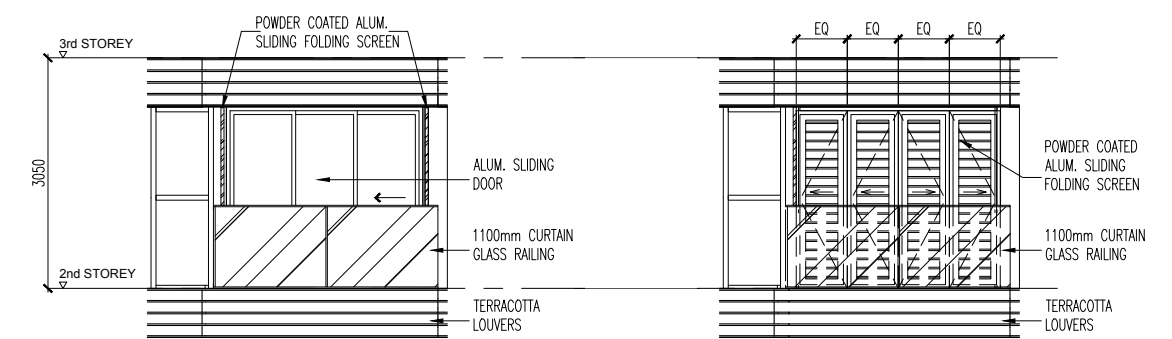
## TYPICAL PES/BALCONY SCREEN DESIGN

\* PES / BALCONIES CANNOT BE ENCLOSED UNLESS WITH APPROVED PES / BALCONY SCREENS



SECTIONAL VIEW

PLAN VIEW



ELEVATION, FULLY OPEN

ELEVATION, FULLY CLOSE

