

KINGSFORD  
WATERBAY

鑫丰银河湾

A decorative graphic consisting of two overlapping, wavy lines. The top line is light blue and the bottom line is a darker blue, creating a stylized wave effect.

1 BEDROOM to 2 BEDROOMS

# SITE PLAN



## LEGEND

### Zone 1: The Stream

1. Fitness Corner
2. Sunset Pavilion
3. Hydro Walk
4. Spa Creek
5. 50m Lap Pool
6. Water Theater
7. The Creek Pool Deck
8. Zen Garden
9. Ecological Pond
10. Sky Bar

### Zone 2: The River

11. BBQ Sun Deck
12. Adventure Pool
13. Mist Pool
14. Jet Pool
15. River Side Pool Deck
16. Outdoor Gym

### Zone 3: The Cove

17. Lagoon Deck
18. BBQ Pavilion
19. Bubbling Pool (Children Pool)
20. Water Slide Playground
21. Outdoor Kitchen Class
22. Lagoon Pool (50m Lap Pool)
23. Wave Pool
24. Aqua Gym
25. Water Front Pool Deck
26. Outdoor Game Room

### Zone 4: The Waterfall

27. Rolling Lawn
28. Water Fall Ridge
29. Function Deck
30. Putting Green
31. Water Zen Garden

### Zone 5: The Promenade

32. Meditation lawn
33. Afternoon Tea Court
34. Chess Garden
35. Rolling Hill Park
36. Shallow Mat
37. Viewing Terrace

### Zone 6: The Club

38. Multi-Purpose Room
39. Gym Room
40. Courtyard
41. Viewing Deck
42. Commercial Shops
43. Tennis Court
44. Changing Rooms & Steam Rooms
45. Childcare Centre

0 5 10 20 30 50M





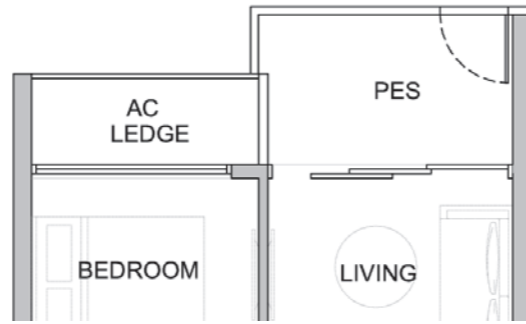
# RESIDENTIAL

## ONE BEDROOM

### TYPE A1-P

Unit: #03-09, #03-27, #03-45  
#03-26, #03-44, #03-62 (mirror)

Area: 484 sqft | 45 sqm



### TYPE A1

Unit: #04-09 to #15-09 #04-26 to #15-26 (mirror)  
#04-27 to #15-27 #04-44 to #15-44 (mirror)  
#04-45 to #15-45 #04-62 to #15-62 (mirror)

Area: 484 sqft | 45 sqm



### TYPE A1-P

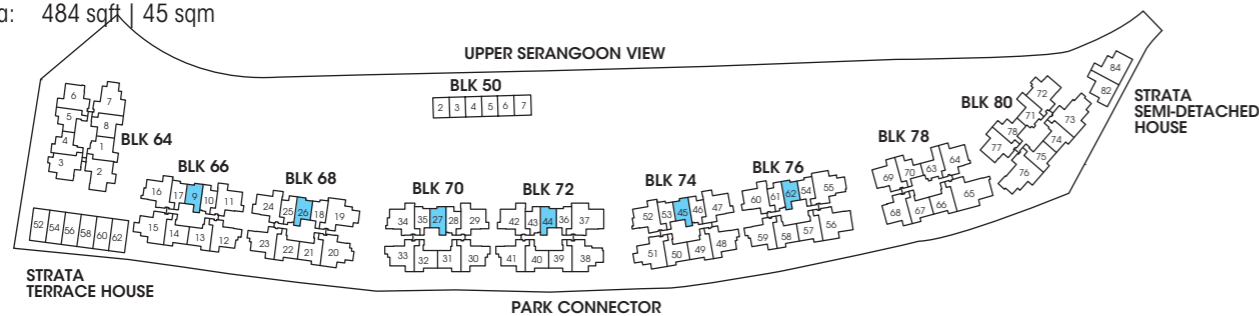
Unit: #03-09, #03-27, #03-45  
#03-26, #03-44, #03-62 (mirror)

Area: 484 sqft | 45 sqm

### TYPE A1

Unit: #04-09 to #15-09 #04-26 to #15-26 (mirror)  
#04-27 to #15-27 #04-44 to #15-44 (mirror)  
#04-45 to #15-45 #04-62 to #15-62 (mirror)

Area: 484 sqft | 45 sqm



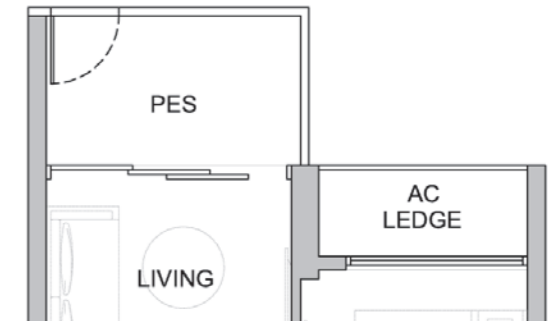
• Area includes A/C ledge, balcony, PES, private roof terrace and void (where applicable). Orientations and facings will differ depending on the unit you are purchasing. Pls refer to the key plan. All plans are not to scale and are subject to changes as may be approved by the relevant authorities. All floor areas are estimates and are subject to final survey.  
• Visual screens are subject to authority site confirmation.

## ONE BEDROOM

### TYPE A1a-P

Unit: #03-10, #03-28, #03-46  
#03-25, #03-43, #03-61 (mirror)

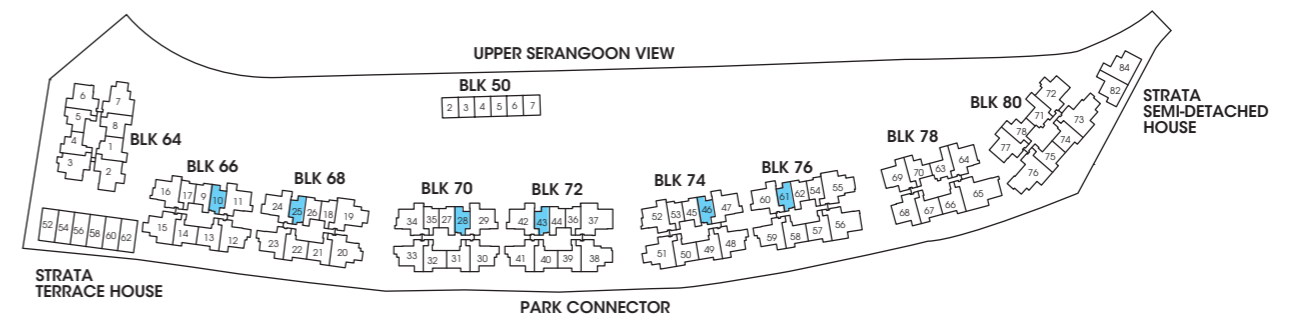
Area: 484 sqft | 45 sqm



### TYPE A1a

Unit: #04-10 to #15-10 #04-25 to #15-25 (mirror)  
#04-28 to #15-28 #04-43 to #15-43 (mirror)  
#04-46 to #15-46 #04-61 to #15-61 (mirror)

Area: 484 sqft | 45 sqm



• Area includes A/C ledge, balcony, PES, private roof terrace and void (where applicable). Orientations and facings will differ depending on the unit you are purchasing. Pls refer to the key plan. All plans are not to scale and are subject to changes as may be approved by the relevant authorities. All floor areas are estimates and are subject to final survey.  
• Visual screens are subject to authority site confirmation.

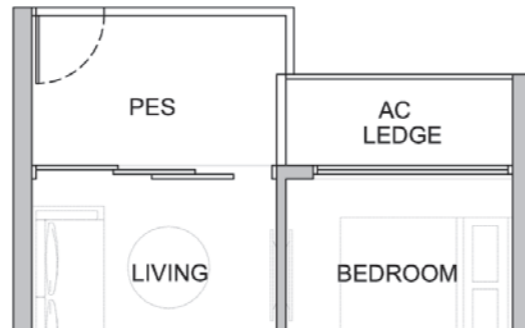
# RESIDENTIAL

## ONE BEDROOM

### TYPE A1b-P

Unit: #03-17, #03-35, #03-53  
#03-18, #03-36, #03-54 (mirror)

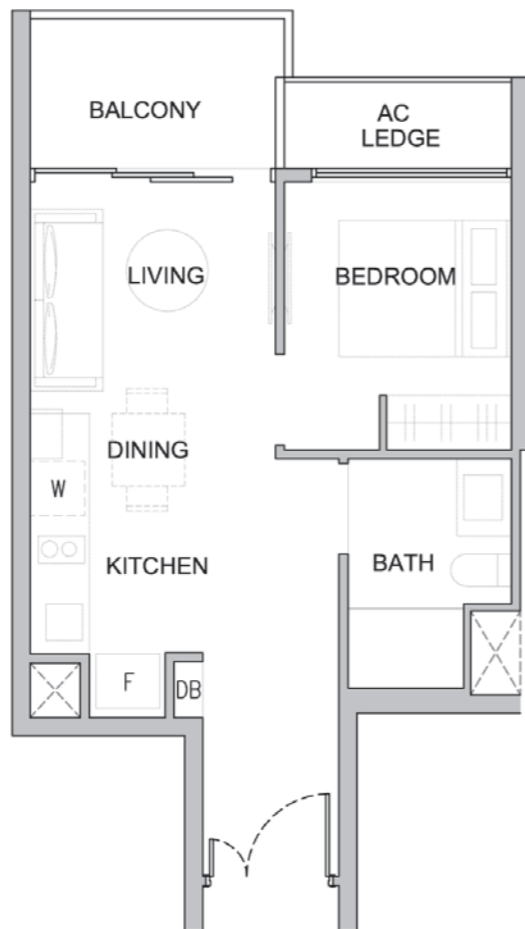
Area: 474 sqft | 44 sqm



### TYPE A1b

Unit: #04-17 to #15-17 #04-18 to #15-18 (mirror)  
#04-35 to #15-35 #04-36 to #15-36 (mirror)  
#04-53 to #15-53 #04-54 to #15-54 (mirror)

Area: 474 sqft | 44 sqm



## TWO BEDROOMS

### TYPE B1-P

Unit: #03-70  
#03-78

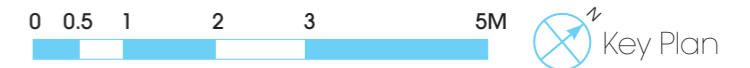
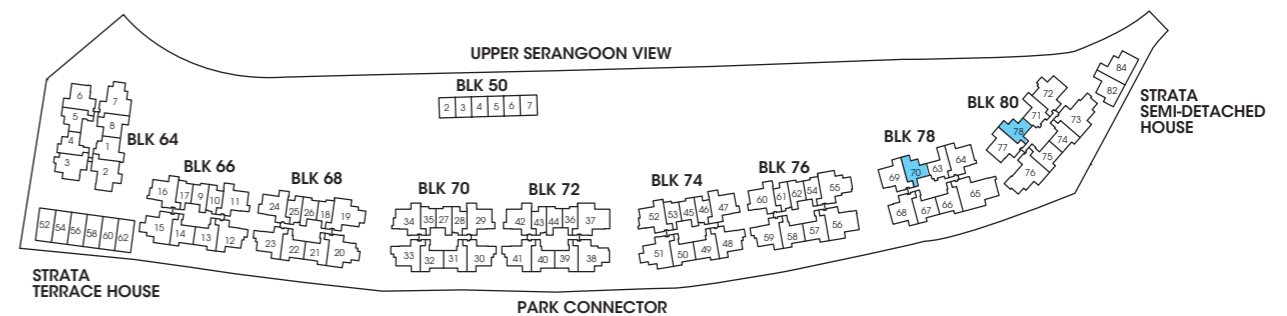
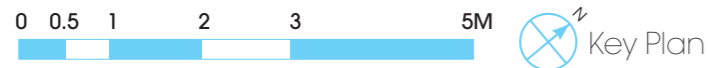
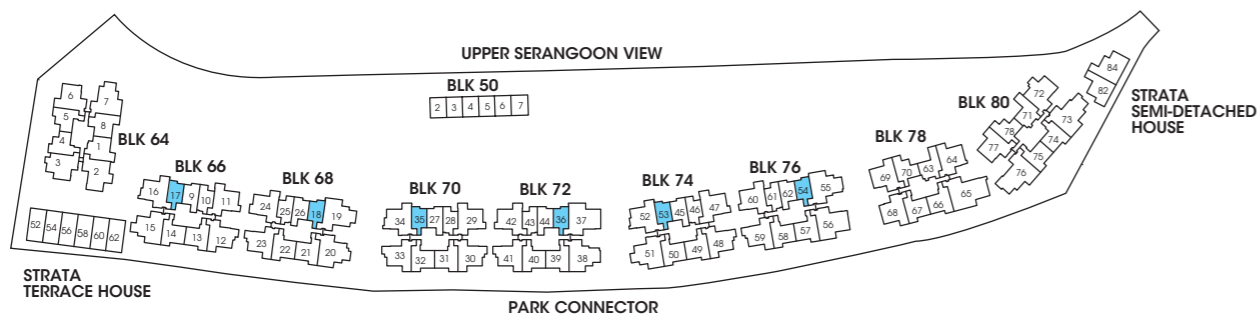
Area: 635 sqft | 59 sqm



### TYPE B1

Unit: #04-70 to #15-70  
#04-78 to #15-78

Area: 635 sqft | 59 sqm



• Area includes A/C ledge, balcony, PES, private roof terrace and void (where applicable). Orientations and facings will differ depending on the unit you are purchasing. Pls refer to the key plan. All plans are not to scale and are subject to changes as may be approved by the relevant authorities. All floor areas are estimates and are subject to final survey.  
• Visual screens are subject to authority site confirmation.

• Area includes A/C ledge, balcony, PES, private roof terrace and void (where applicable). Orientations and facings will differ depending on the unit you are purchasing. Pls refer to the key plan. All plans are not to scale and are subject to changes as may be approved by the relevant authorities. All floor areas are estimates and are subject to final survey.  
• Visual screens are subject to authority site confirmation.

# RESIDENTIAL

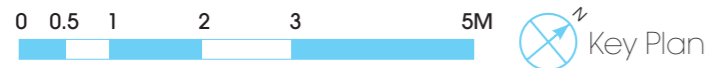
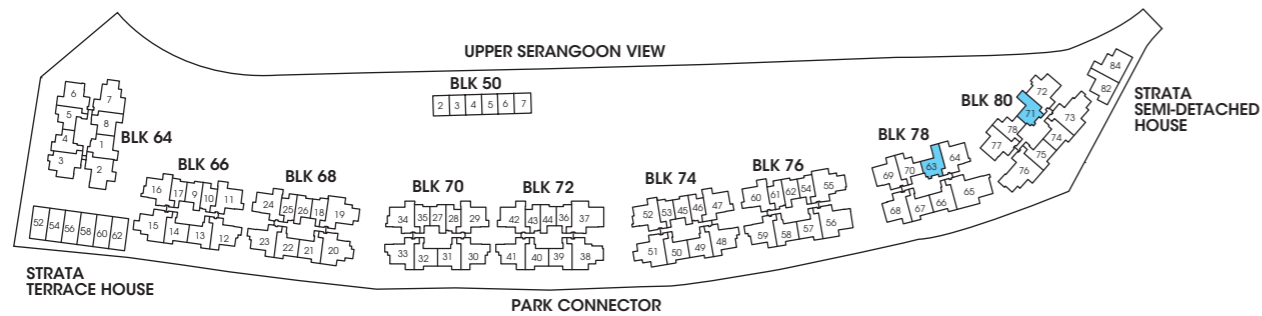
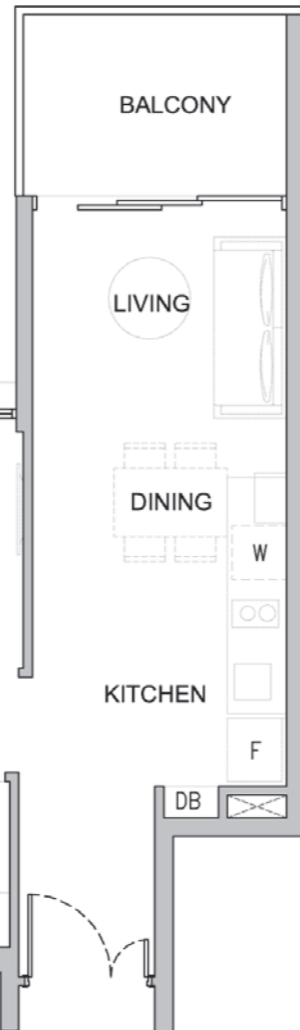
## TWO BEDROOMS

### TYPE B1a-P

Unit: #03-63  
#03-71  
Area: 657 sqft | 61 sqm

### TYPE B1a

Unit: #04-63 to #15-63  
#04-71 to #15-71  
Area: 657 sqft | 61 sqm



• Area includes A/C ledge, balcony, PES, private roof terrace and void (where applicable). Orientations and facings will differ depending on the unit you are purchasing. Pls refer to the key plan. All plans are not to scale and are subject to changes as may be approved by the relevant authorities. All floor areas are estimates and are subject to final survey.  
• Visual screens are subject to authority site confirmation.

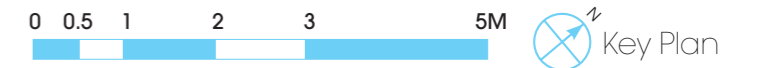
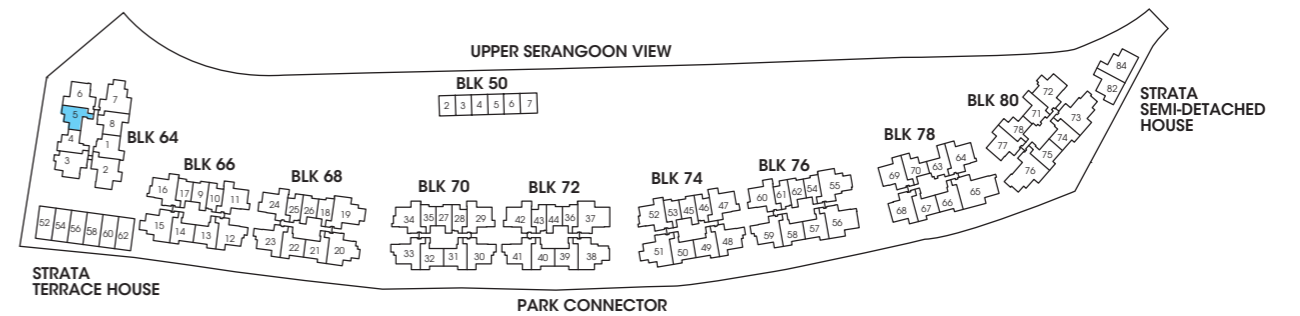
## TWO BEDROOMS

### TYPE B1b-P

Unit: #02-05  
Area: 614 sqft | 57 sqm

### TYPE B1b

Unit: #03-05 to #15-05  
Area: 614 sqft | 57 sqm



• Area includes A/C ledge, balcony, PES, private roof terrace and void (where applicable). Orientations and facings will differ depending on the unit you are purchasing. Pls refer to the key plan. All plans are not to scale and are subject to changes as may be approved by the relevant authorities. All floor areas are estimates and are subject to final survey.  
• Visual screens are subject to authority site confirmation.

# RESIDENTIAL

## TWO BEDROOMS

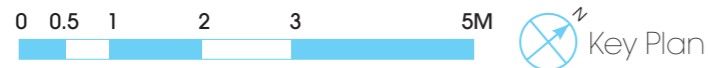
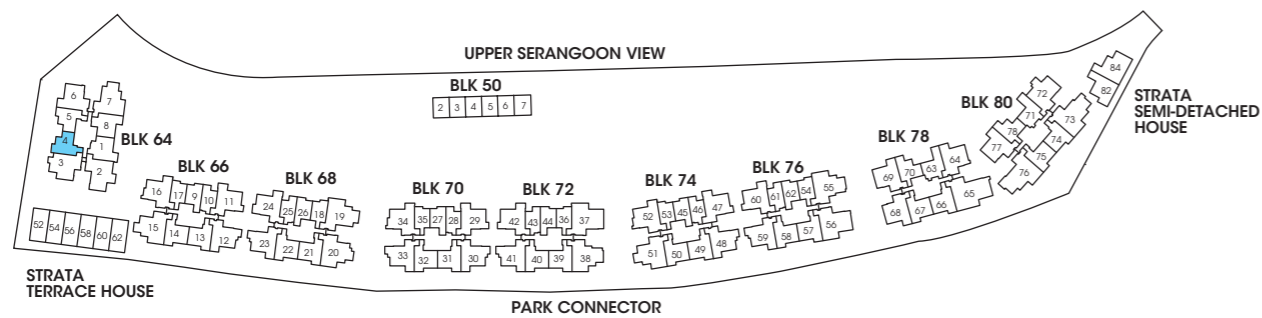
### TYPE B1c-P

Unit: #02-04  
Area: 624 sqft | 58 sqm



### TYPE B1c

Unit: #03-04 to #15-04  
Area: 624 sqft | 58 sqm

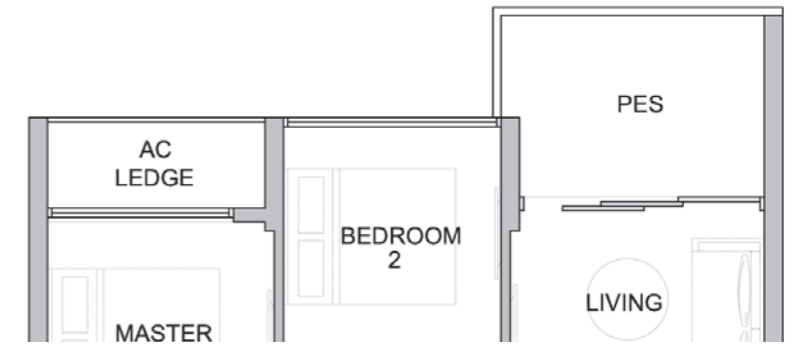


• Area includes A/C ledge, balcony, PES, private roof terrace and void (where applicable). Orientations and facings will differ depending on the unit you are purchasing. Pls refer to the key plan. All plans are not to scale and are subject to changes as may be approved by the relevant authorities. All floor areas are estimates and are subject to final survey.  
• Visual screens are subject to authority site confirmation.

## TWO BEDROOMS

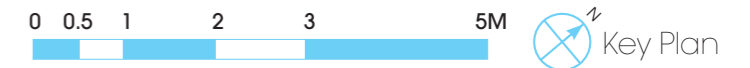
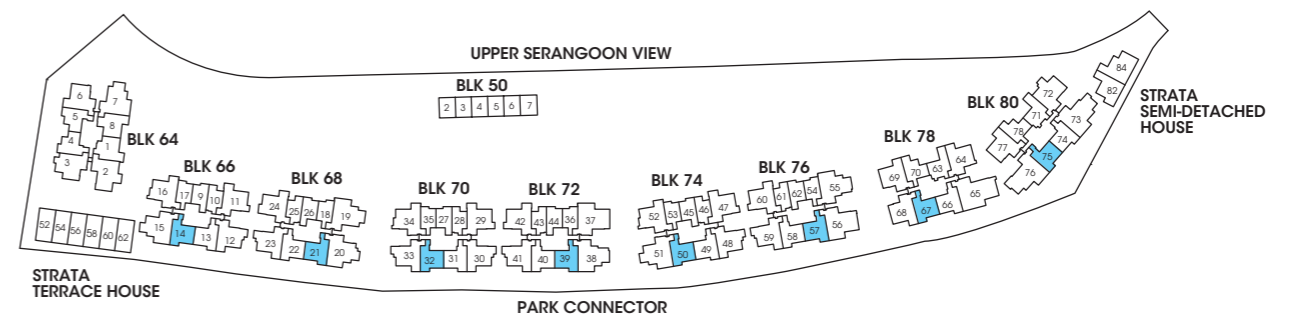
### TYPE B2-P

Unit: #01-14, #01-32, #01-50, #01-67, #01-75  
#01-21, #01-39, #01-57 (mirror)  
Area: 678 sqft | 63 sqm



### TYPE B2

Unit: #02-14 to #15-14 #02-21 to #15-21 (mirror)  
#02-32 to #15-32 #02-39 to #15-39 (mirror)  
#02-50 to #15-50 #02-57 to #15-57 (mirror)  
#02-67 to #15-67  
#02-75 to #15-75  
Area: 678 sqft | 63 sqm



• Area includes A/C ledge, balcony, PES, private roof terrace and void (where applicable). Orientations and facings will differ depending on the unit you are purchasing. Pls refer to the key plan. All plans are not to scale and are subject to changes as may be approved by the relevant authorities. All floor areas are estimates and are subject to final survey.  
• Visual screens are subject to authority site confirmation.

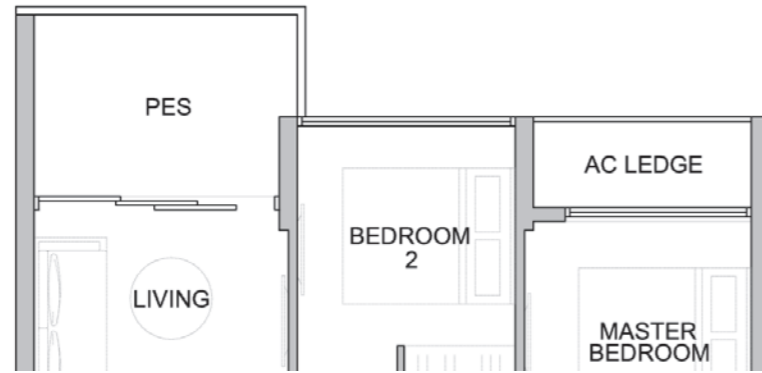
# RESIDENTIAL

## TWO BEDROOMS

### TYPE B2a-P

Unit: #01-13, #01-31, #01-49, #01-66, #01-74  
#01-22, #01-40, #01-58 (mirror)

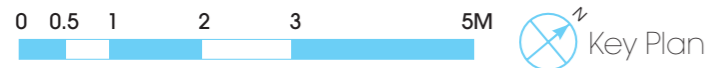
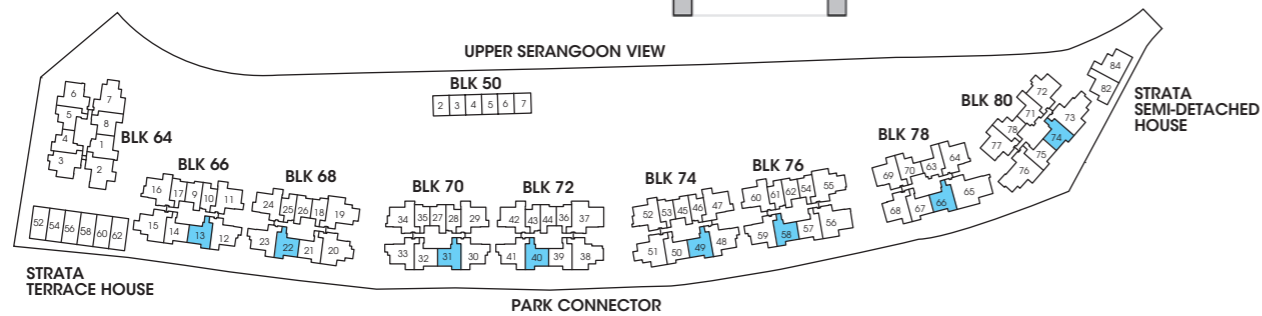
Area: 689 sqft | 64 sqm



### TYPE B2a

Unit: #02-13 to #15-13 #02-22 to #15-22 (mirror)  
#02-31 to #15-31 #02-40 to #15-40 (mirror)  
#02-49 to #15-49 #02-58 to #15-58 (mirror)  
#02-66 to #15-66  
#02-74 to #15-74

Area: 689 sqft | 64 sqm



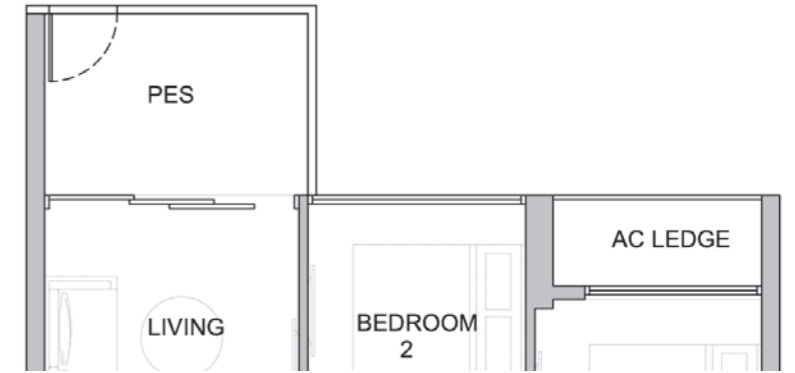
• Area includes A/C ledge, balcony, PES, private roof terrace and void (where applicable). Orientations and facings will differ depending on the unit you are purchasing. Pls refer to the key plan. All plans are not to scale and are subject to changes as may be approved by the relevant authorities. All floor areas are estimates and are subject to final survey.  
• Visual screens are subject to authority site confirmation.

## TWO BEDROOMS

### TYPE B2b-P

Unit: #03-08

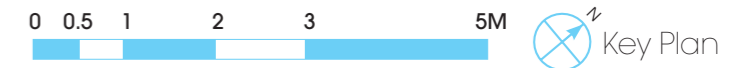
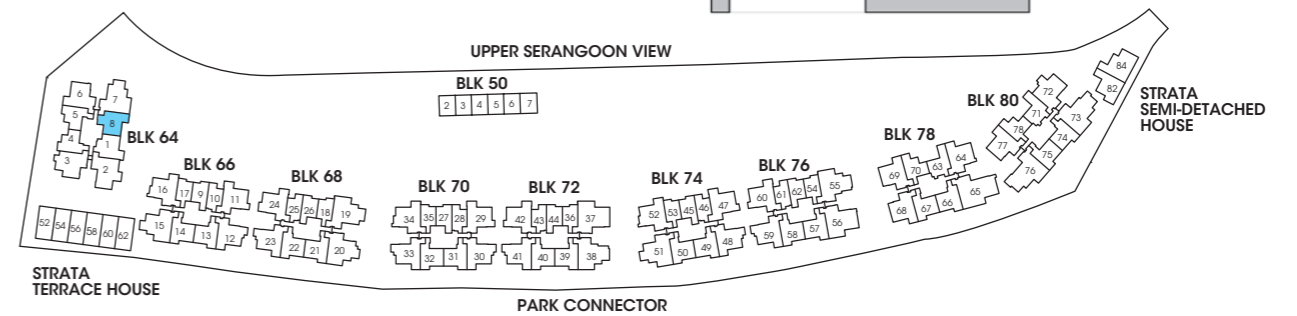
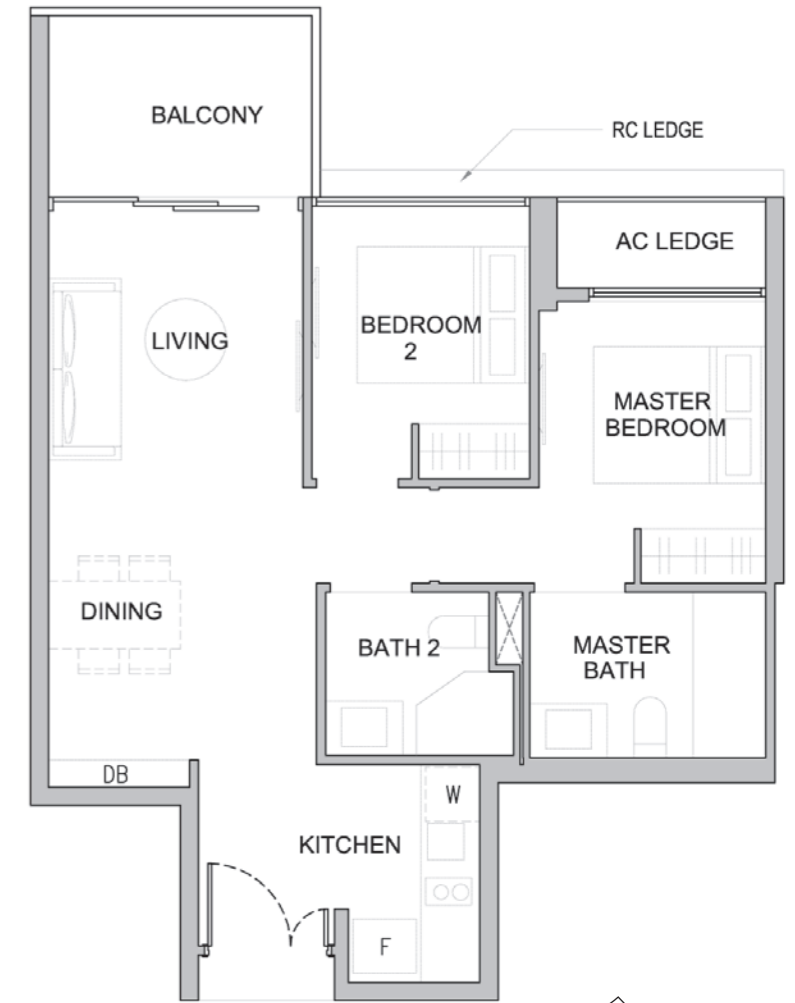
Area: 710 sqft | 66 sqm



### TYPE B2b

Unit: #04-08 to #15-08

Area: 710 sqft | 66 sqm



• Area includes A/C ledge, balcony, PES, private roof terrace and void (where applicable). Orientations and facings will differ depending on the unit you are purchasing. Pls refer to the key plan. All plans are not to scale and are subject to changes as may be approved by the relevant authorities. All floor areas are estimates and are subject to final survey.  
• Visual screens are subject to authority site confirmation.



# RESIDENTIAL

## TWO BEDROOMS

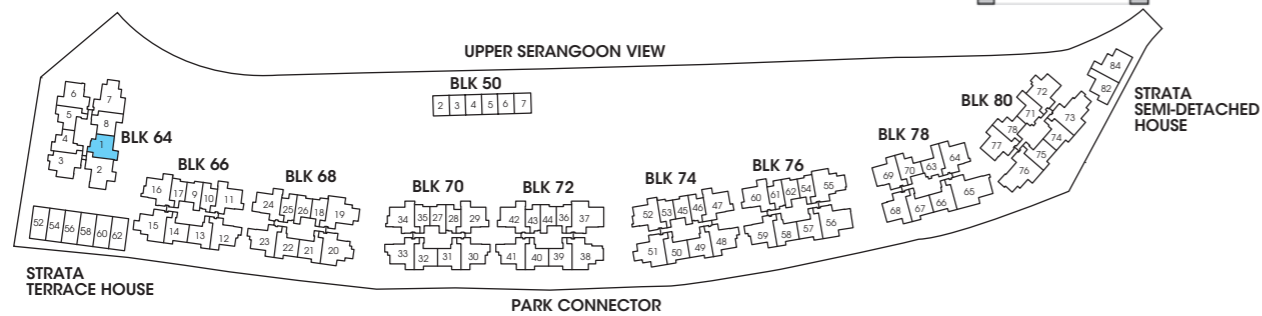
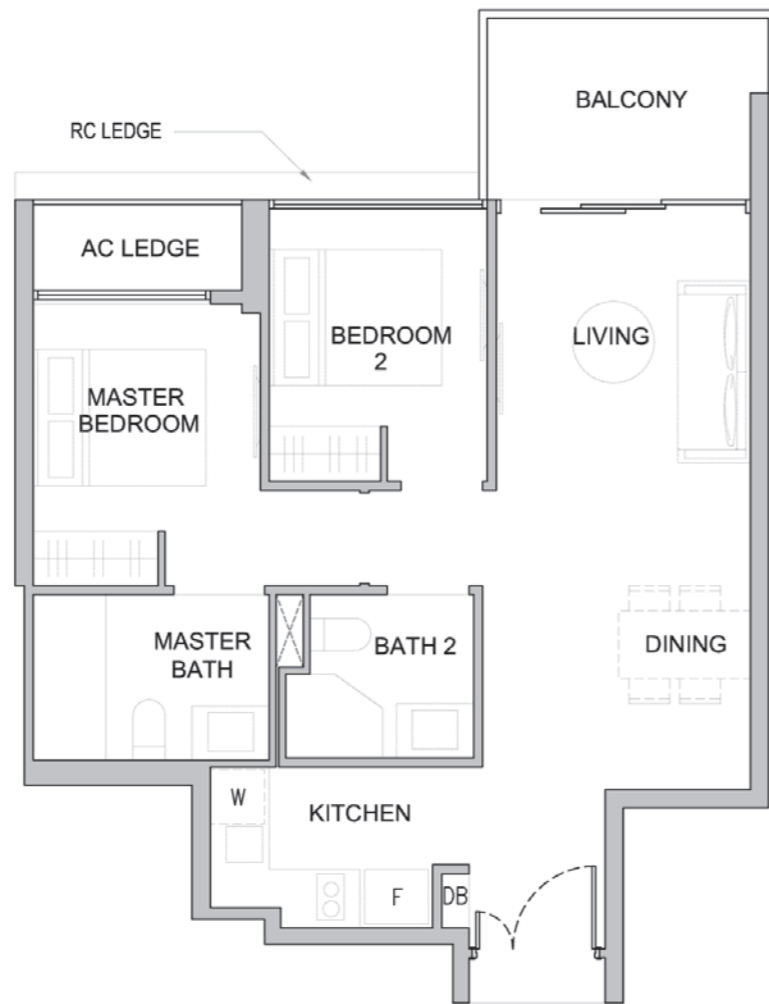
### TYPE B2c-P

Unit: #03-01  
Area: 721 sqft | 67 sqm



### TYPE B2c

Unit: #04-01 to #15-01  
Area: 721 sqft | 67 sqm



0 0.5 1 2 3 5M Key Plan

• Area includes A/C ledge, balcony, PES, private roof terrace and void (where applicable). Orientations and facings will differ depending on the unit you are purchasing. Pls refer to the key plan. All plans are not to scale and are subject to changes as may be approved by the relevant authorities. All floor areas are estimates and are subject to final survey.  
• Visual screens are subject to authority site confirmation.

## TWO BEDROOMS

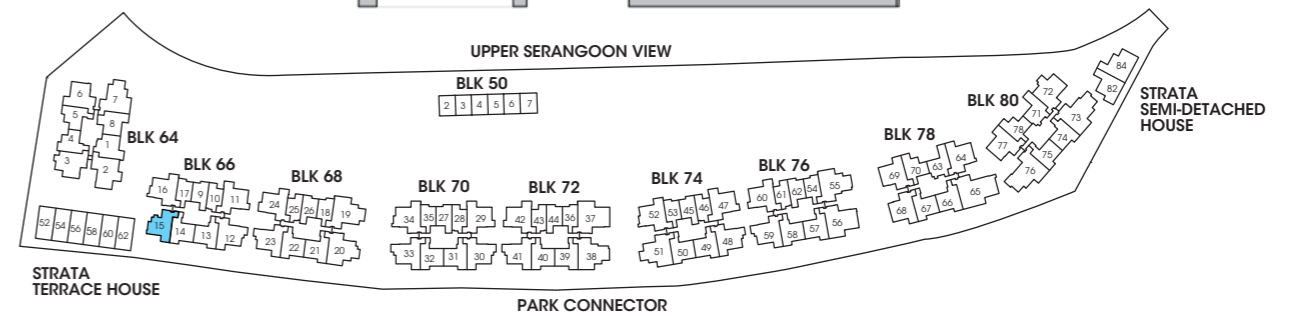
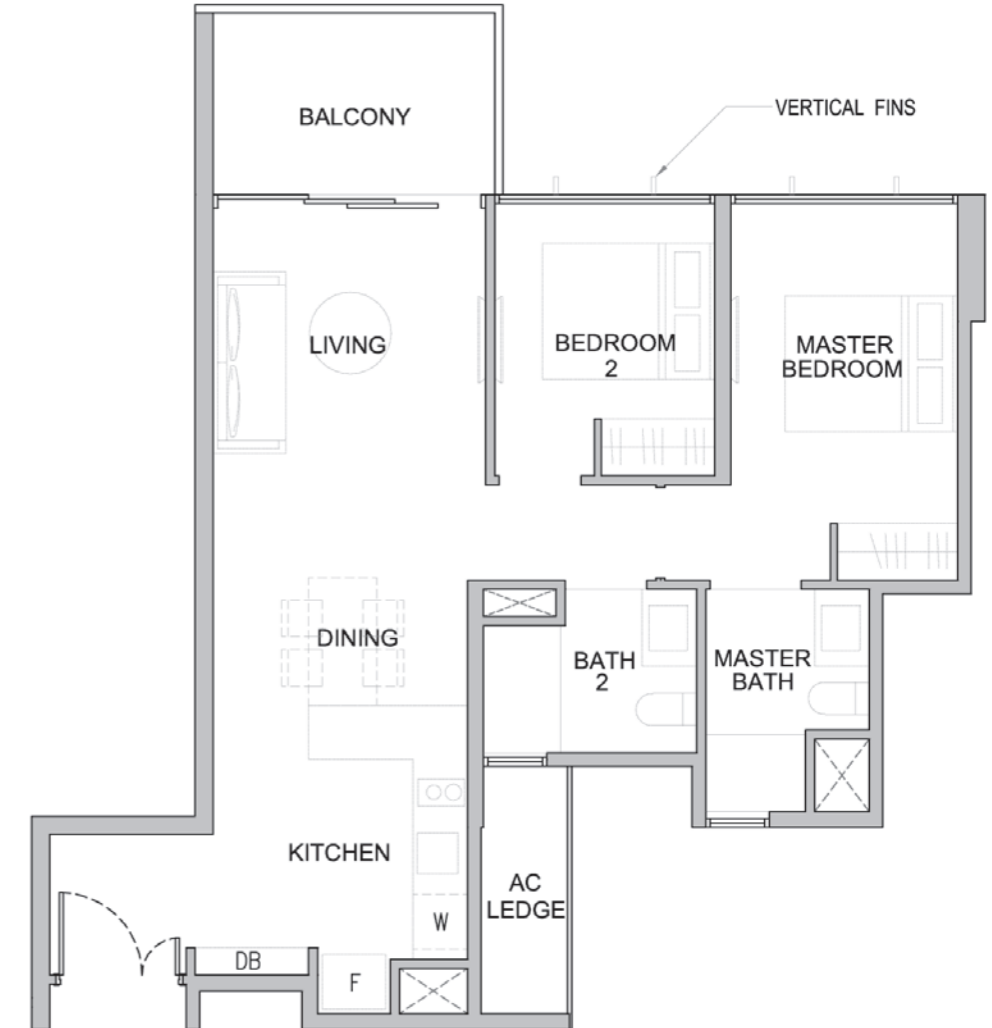
### TYPE B2d-P

Unit: #01-15  
Area: 775 sqft | 72 sqm



### TYPE B2d

Unit: #02-15  
Area: 775 sqft | 72 sqm



0 0.5 1 2 3 5M Key Plan

• Area includes A/C ledge, balcony, PES, private roof terrace and void (where applicable). Orientations and facings will differ depending on the unit you are purchasing. Pls refer to the key plan. All plans are not to scale and are subject to changes as may be approved by the relevant authorities. All floor areas are estimates and are subject to final survey.  
• Visual screens are subject to authority site confirmation.



